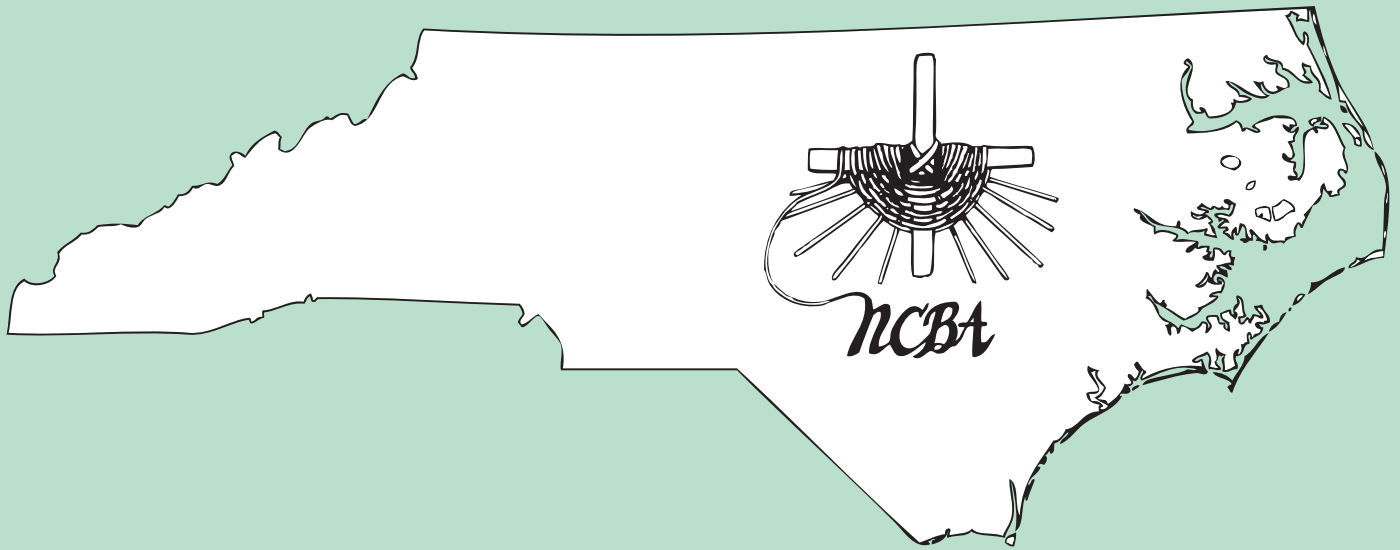


# *Weaving in Carolina*



*NCBA 2015*

# *Welcome to Weaving in Carolina*

I am dedicating this brochure to all the Native Americans who taught the people how to use the earth's treasures to weave baskets. I had the privilege of weaving with a Native American in Cherokee, North Carolina several years ago. It was an experience I shall never forget. I have kept the basket in my collection.

I also want to thank all of the volunteers who have devoted their time in getting this convention "put together", especially Alma Lambert. She has helped me in numerous ways. Believe me, the second time around is no easier than the first. I hope you enjoy the baskets and find many selections you wish to take. Thanks to Cheryl Thomas, Janice Humphreys and their guild for the jurying process. It is a lot of hard work!!!

I hope to see you at the 2015 convention and let's celebrate all the beautiful baskets.

Please read and refer to the check list that will help remind you of important dates.

- Make reservations ASAP! The Sheraton Imperial phone number is 919-941-5050. Be sure to let them know you are with NCBA. Room rates this year are \$108.00 per night.
- Choose you classes carefully. Be sure to follow the registration directions carefully.

## **\*Dates to remember:**

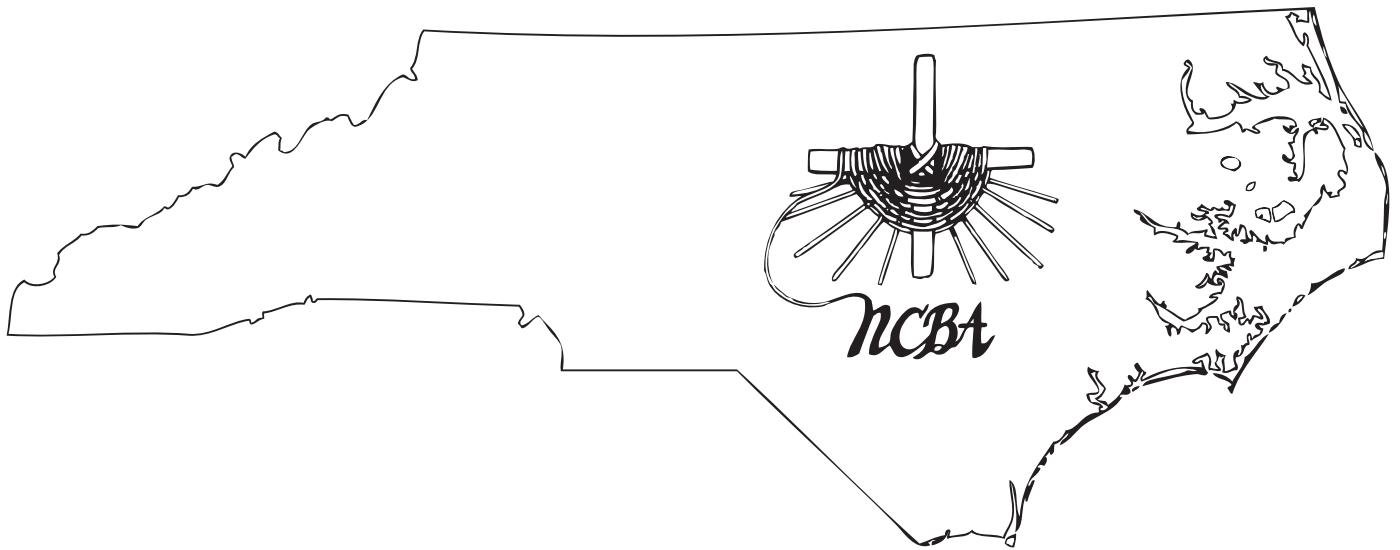
- **December 17, 2014:** Deadline for first round of class choices.
- **January 31, 2015:** All class fees **must** be paid or your name will be removed from the class list.
- **February 1, 2015:** Deadline to send in your shirt order.
- **March 19-22:** Weaving in Carolina convention registration begins at 11:00 am - classes begin at 1:00 pm

If you have any questions about any of the above information, or if I can assist you in any way, please email me at [mailjdmiller@earthlink.net](mailto:mailjdmiller@earthlink.net).

**SEE YOU AT CONVENTION!!!!**

***Jeanette***

# *Weaving in Carolina*



*NCBA Convention 2015*

*March 19-22, 2015*

*Durham, NC*

**NCBA Convention 2015**  
**Weaving in Carolina**  
**Contents**

Brochure Dedication . . . . . Inside Cover

Points to Remember . . . . . Inside Cover

Contents . . . . . Page 1

Convention Volunteers . . . . . Page 2

How to Register . . . . . Pages 3 & 4

Skill Level for Classes . . . . . Page 4

Convention Schedule . . . . . Page 5

Exhibit Room . . . . . Page 6

Coordinator . . . . . Page 7

Raffle . . . . . Page 7

Class Assignments . . . . . Page 7

Roommates . . . . . Page 7

Teacher’s Marketplace . . . . . Page 7

Teacher Liaison . . . . . Page 7

Vendors . . . . . Page 7

Goody Bags . . . . . Page 8

Visitors Day . . . . . Page 8

Convention Rememberences (t-shirts, etc.) . . . . . Page 8

Basket Swap . . . . . Page 8

Volunteers/Volunteer Raffle . . . . . Page 8

Hotel . . . . . Page 8

Seminars . . . . . Page 10

Mini Bonus . . . . . Page 11-12

Thursday Classes . . . . . Pages 12-21

Friday Classes . . . . . Pages 21-29

Saturday Classes . . . . . Pages 29-37

Sunday Classes . . . . . Pages 37-39

Teachers Bios . . . . . Pages 40-46

Map . . . . . Page 47

*This brochure is a publication of the North Carolina Basketmakers Association and is available only to its members.*



## NCBA Convention Volunteers

Brochure . . . . .	Jeanette Miller
Basket Swap . . . . .	Becki Newsome
Class Assignments . . . . .	Cathy Lehman, Brenda Elshof & Triangle Basketweavers
Class Signs . . . . .	Sandra Horvath, Debbie Milligan, and Bobbie Royster
Convention Photography . . . . .	Devonna Mathis
Exhibit Room . . . . .	Becky Smith
Good Bags . . . . .	Jeanette Miller
Jurying & Brochure Photography . . . . .	Cheryl Thomas & Janice Humphreys
Logo . . . . .	Jeanette Miller
NCBA Store . . . . .	Judy Swaim & Lynn Schroeder
Name Tags . . . . .	Class Assignments Committee
Open Classes . . . . .	Katie Lake
Raffle . . . . .	Rita Warren & Staff
Registration & Information Center . . . . .	Leo Robertson & Scott Lovelace
Roommates . . . . .	Leslie Fortune
Table Committee . . . . .	Tidewater Basket Guild
T-Shirt/Rememberences . . . . .	Jean Lovelace
Teacher Liaison . . . . .	Alma Lambert
Teacher Marketplace . . . . .	Charlene White & Coastal Carolina Basketweavers Association
Teacher Name Tags . . . . .	Jean Lovelace
Vendors . . . . .	Laura Lee & Steve Zanger
Vistor's Day . . . . .	Susan Legaj & Tar River Basketmakers
Volunteer Coordinator . . . . .	Larry Allison
Website . . . . .	Pamela Zimmerman

## *How to Register*

***It is important that you read carefully and follow these instructions.***

All members of NCBA will receive the 2015 Convention Brochure if they are members by July 31, 2014 or have paid the five dollar late fee by Sept. 20, 2014. Teachers at the 2015 Convention must register if they wish to take classes. Those who do not wish to take classes do not need to register.

### **Registration for Convention**

1. You have the option of registering online or through the mail. **There will be no preference given to mailed forms, or to online registrations. They will be treated the same.**

2. **Assignments will be done randomly.** As long as you paid your NCBA membership fee on time and your registration has been received by the deadline, it will go in the first run of assignment program.

Those with late memberships or sending in registration after the deadline will be assigned manually.

3. As long as you have paid your membership fee and your email address is correct in the NCBA database you can sign in online, and update your personal information. You can register for convention online.

4. People who log in the website will be able to view and change their choices until December 14, 2014. They will also be able to view their schedule when it is available. You no longer have to wait until Dec. 1 to send in your registration. You can send it in any time before the deadline.

### **To Use the Online Registration:**

To use the online registration, you must already be a member. You cannot use the online system to join NCBA. If you aren't a member yet, you need to go through our membership chairperson, Janice Humphreys.

**First you must create a login and get a password.** Go to the NCBA website at [NCBasketmakers.com/dbstuff](http://NCBasketmakers.com/dbstuff) and click on Member's Page. Follow the directions for creating a login and password.

**PLEASE NOTE! : You will need to remember your login name. Write it down!** You might want to try using your first name, or your first name and a number, or initials and part of your name, ex. samj. or sjones. You will receive your password by email, so it is important that we have your correct email in the database. (You might need to wait 5 minutes before you get your password). If the login name is already being used by someone else, you will have to choose another and you will be told it is in use.

Online registration fee must be paid with a credit card. Just follow online instructions for paying by credit card. You will need to pay for convention registration before you can choose classes.

**After December 14, 2014, all classes will need to be assigned manually; you can no longer choose your classes online.** You will still be able to register online, but all class choices will need to be called in, or emailed to Brenda or Cathy. No additional classes can be added after February 28, 2015; however, you will be able to purchase any open classes at convention.

**If you are having trouble you can call during the evening Cathy Lehman 919-553-5917 or Brenda Elshof at 919-846-5980.**

## Registration by Mail

Each member will receive a registration form in the convention brochure. Your \$65.00 registration fee must accompany the registration form along with a **stamped, self-addressed 4 x 9 envelope**. **Do not send any money** for classes or extra class hours until you have received your class assignments and confirmation from the Class Assignments Committee. You may register and sign up for classes as soon as you receive your Convention brochure. Registration forms **must be received** by December 14, 2014.

## Cancellations

All convention cancellations **must be in writing before February 1, 2015**. A **\$30.00 processing fee will be deducted from all refunds**. The refunds will be issued all at once in mid March. This information is for online registration as well as mail in registration. When you pay for a class, the teacher is coming based on your commitment, so there are no refunds for the classes that you have paid for, but you can have someone pick up your kits from the teacher at convention.

## Class Fees

You will receive notification by email (if you have a current email in your profile) and by US mail around January 1. All class fees must be received by January 25, 2015 or the class will be forfeited. You must either pay online, or write a check made out to the teacher for each class. **If you are taking more than one class from a teacher, please note that you have to write a check for each class.**

## Extra Hour Fees

Your \$65.00 registration fee pays for 16 hours of classes. If you take more than 16 hours of classes, there will be an additional charge of \$3.00 per hour. This charge can be paid online with a credit card, or by a check made out to NCBA. It should be included with your class fees and is due on January 26, 2015. This also applies to classes purchased at the Open Classes table.

## Skill Levels for Classes

**Beginner...** Little or no weaving experience with the material being used. Example: you have woven with flat reed and the class you wish to take is a round reed, which you have not tried.

**Beginner/Intermediate...** Still a beginner but ready for something more challenging.

**Intermediate...** Skilled at basic techniques with material being used. Weaver has no trouble setting up bases, twining, over-under weaves, and rims using the material of the class offered.

**Intermediate/Advanced...** Still an intermediate weaver but ready to try something more challenging.

**Advanced...** Have mastered all basic skills and ready to try new techniques, fibers, shaping, and creative methods.

**All Levels...** All level classes are offered to students from Beginner to Advanced skills. Teacher feels student will have no difficulty in completing project.

## Convention Schedule

### Thursday, March 19th

Open Classes	10 am - 5pm - Convention Foyer
Convention Registration & Information	11 am - 7pm - Convention Foyer
Hotel Registration	3pm - Hotel Registration Desk
Vendors	11 am - 8pm - Empire Ballroom 1st floor vending/sleeping rooms
Seminars & Mini Bonus Classes	1pm - 3pm Imperial Ballroom Crown A, Room 101
Classes	3:00pm - 10pm Imperial Ballroom, Crown A, Royal A & B, Room 101
Exhibit Room ( Accept Baskets)	5pm - 7pm (None accepted after 7pm) Drop off baskets at Bull Durham Room
Raffle Displays ( Accepting raffle items)	Convention Foyer
NCBA Store	11am - 8pm Crown B

### Friday, March 20th

Convention Registration and Information	7:30am - 6pm - Convention Foyer
Open Classes	7:30am - 5pm - Convention Foyer
Classes	8am - 5pm - Imperial Ballroom, Royal A & B, Crown A, Room 101
Vendors	8am - 7pm Empire Ballroom, First floor vending/sleeping rooms
Visitor's Day	1pm – 7pm
Exhibit Room	9am - 5pm - Bull Durham Room
Raffle Display & Volunteer Raffle Display	Convention Foyer
Basket Swap	6:30 - 7:30pm - Drop off baskets in Room 101 7:30pm Basket swap in room 101
Teacher Marketplace	8pm - 10pm - Imperial Ballroom
NCBA Store	8am - 7pm Crown B

### Saturday, March 21st

Visitors Day Passes Available	8am - 5pm Convention Foyer
Classes	8am - 5pm Imperial Ballroom, Royal A & B, Crown A, Room 101
Vendors	8am - 7pm Empire Ballroom, First floor vending/sleeping rooms
Exhibit Room	9am - 4pm Bull Durham Room
Raffle Display & Volunteer Raffle Display	Convention Foyer Volunteer Raffle Drawing 6pm - Volunteer raffle table
Annual Business Meeting & Raffle	8pm - 9:30 pm - Imperial Ballroom
NCBA Store	8am - 7pm - Crown B

### Sunday, March 22nd

Classes	8am - 12pm - Imperial Ballroom
NCBA Store	8am - 10am - Crown B
Vendors	8am - 10am - Empire Ballroom First Floor vending sleeping rooms

### Exhibit Room

The exhibit room is a gallery setting for NCBA members to show their finest work and all members are encouraged to participate. Class and kit baskets are NOT eligible. Once a basket has been shown in the Exhibit Room, it is not eligible to compete again.

If you teach or sell baskets, you MUST enter in the Professional/Teacher class. The novice category will accept all types of baskets and be limited to weavers with less than 2 years of experience.

Cash awards are sponsored by PLB "Blue Ribbon Reed" in the following categories:

	Professional/Teacher	General Membership
Flat Reed (also includes flat/oval).....	\$25.....	\$25
Naturals (oak, maple, ash, woods, etc).....	\$25.....	\$25
Wire and Textile ( wire, waxed linen, waxed cotton , paper, etc).....	\$25.....	\$25
Mixed Media.....	\$25.....	\$25
Wicker (round reed, willow, anything woven "wicker style").....	\$25.....	\$25
Coiling (anything coiled-pine needles, glass, cords, etc.....	\$25.....	\$25
Ribbed (any material woven with a "Rib" technique.....	\$25.....	\$25
Mold Woven (Nantuckets, shakers, etc.).....	\$25.....	\$25
Miniature (4" or less).....	\$25.....	\$25
Novice (Weavers or less than 2 years, all styles of baskets accepted.....		\$25
Viewers Choice.....	\$100.....	\$100

The Natural Fibers Group sponsors the Extraordinary Natural Basketmakers' Award of \$50, juried from entries that include natural materials gathered by the basketmaker. To be considered, fill out a form at the Exhibit Room. Baskets from all categories are eligible.

On a 3 x 5 card, in twenty-five words or less, type or print a descriptive statement including: entry name, materials used, special techniques employed and THE CATEGORY YOU WISH TO ENTER. Please do not include the weaver's name. On a separate card, include all of the above information AND the weaver's name. All entries are included in the WEAVERS CHOICE category.

Entrants MUST be NCBA members, but need not be attending convention to enter. Entries must be delivered to the Exhibit Room between 5:00pm and 7:00pm on Thursday, March 19. You will need to sign a release of liability to NCBA and our host hotel. Liability for your basket should be covered under your homeowner's insurance policy.

Entries may be viewed Friday and Saturday. Voting on Friday will be from 9:00am to 5:00pm and 7:00pm to 8:00pm. On Saturday, voting will be from 9:00 am to 2:00 pm. At 2:00 pm, names will be placed on the entries and viewing will continue until 4:00 pm.

**Award-winning baskets will no longer be moved to the Annual Business Meeting for Award Presentation.**

All entries must be picked up within one hour after the close of festivities on Saturday evening.

**PHOTOS ARE ALLOWED IN THE EXHIBIT ROOM  
WITHOUT YOUR PARTICIPATION IT'S JUST AN EMPTY ROOM**

**For further information, contact: Becky Smith  
828-294-0205 smithbecky@ charter.net**

## ***Convention Coordinator***

**Jeanette Miler, 2682 Lakeridge Ct.  
Nebo, North Carolina 28671  
828-777-2051 mailjdmiller@earthlink.net**

## ***Raffle***

**Rita Warren & Staff  
385 Bahama Loop  
Fayetteville, NC 28314  
910-868-7162 luvly2rita@aol.com**

## ***Class Assignments***

**Cathy Lehman,  
6115 Dodsworth Dr. Raleigh, NC 17612  
classassignments@ncbasketmakers.com**

## ***Roommates***

**Leslie Fortune, 5240 Myakka Valley Trl.  
Sarasota, FL 34241 941-921-9857  
lesfort@msn.com**

## ***Teacher's Marketplace***

**Charlene White and Coastal Carolina Basketweavers Assn.  
201 New Bern Avenue, New Bern, NC 28560  
252-633-3210 charlenewhite@suddenlink.net**

On Friday night (8:00 pm - 10:00pm), you will be invited to the "Teachers' Marketplace." All teachers who wish to participate may set up to sell anything basket-related: patterns, kits, supplies, their own baskets, basket jewelry, etc. We ask that all selling take place here in order to avoid class interruptions. please do not approach teachers in their classes, but wait to buy from them during the marketplace. Your cooperation is appreciated! First quality merchandise will be available.

## ***Teacher Liaison***

**Alma Lambert 502 Huntinggreen Dr.  
Asheville, NC 28804 828-658-9433  
almalena@charter.net**

## ***Vendors***

**Laura Lee and Steve Zanger  
2220 Lumpkin Rd., Augusta, GA 30906  
706-560-9800 llzanger@aol.com**

## *Goody Bags*

Jeanette Miller, 2682 Lakeridge Ct., Nebo, NC 28761  
828-777-2051, mailjdmiller@earthlink.net

## *Visitor's Day*

### **Tar River Basketmakers**

Anyone who is not registered for the convention may visit the convention March 20<sup>th</sup>, 1pm – 7pm, and all day Saturday, March 21st. NCBA membership is not required to attend Visitor's Day. Visitors must pay \$5.00 and may visit the exhibit room and vendors. **The classrooms are not open to visitors or those not registered for the convention.**

## *Convention Remembrances (t-shirts, etc)*

Jean Lovelace  
1141 Pecan Street, Conover, NC 28613  
828-256-9289 s-jlovelace@charter.net

## *Basket Swap*

Becki Newsome  
502 Saddlehorn Ct. Swansboro, NC 28584  
252-393-2006 tippysmom@yahoo.com

The Basket Swap will be held in Room 101 and will begin at 7:30pm on Friday night. This is before Teacher Marketplace. Baskets may be dropped off between 6:30pm and 7:30pm Friday in Room 101. **Please tag your handmade basket with your name and address.**

## *Volunteers/Volunteer Raffle*

Larry Allison, 502 Huntinggreen Dr.  
Asheville, NC 28804 828-658-9433 larryalli@charter.net

Volunteers MUST be listed with Registration, and have a name tag. If your spouse wishes to volunteer, please contact the Volunteer Coordinator IN ADVANCE so their name tag can be made. One ticket per hour of work (limit 50 tickets per person) will be issued to each volunteer for the **Volunteer Raffle**. If you wish to make a donation for the volunteer raffle, please contact Larry Allison (see address above). Volunteers work hundreds of hours to make the convention successful. **This year the raffle will be held at 6 pm Saturday at the volunteer table.** Please be present or get your tickets to someone who can collect for you. All tickets must have names on them. Tickets without names will not be honored.

## *Hotel*

NCBA convention 2015 will be held at the Sheraton Imperial Hotel and Convention Center in Reach Triangle Park, NC. The room rate is \$108.00/room/night. Make your reservations early by calling 919-941-5050. The hotel offers shuttle service to and from the airport.



## *Janet Adkerson Memorial Raffle*

Open weave basket made from kudzu and poplar bark was made by Matt Tommey. Matt's interest in fine craft and handmade baskets began as a teenager, growing up in southern Georgia. His passion for using natural materials began to center around creeping southern vine, kudzu while in school in the North Georgia Mountains at Young Harris College and the University of Georgia. Now an Asheville, North Carolina resident, Matt's handcrafted baskets are a whimsical collaboration of traditional Appalachian forms and wild, rustic, natural materials including natural vine (kudzu, honeysuckle, bittersweet, wisteria, and grapevine) and bark (poplar, hickory, mimosa and others). His interpretation of rib baskets and other traditional shapes offer a heartfelt nod to his roots in Appalachian basketry while offering a contemporary expression that is all his own. Matt's most recent work focuses on sculptural basket art vessels using a combination of bark and vines.

As a professional craft artist, Matt is a leader in the contemporary basketry movement, serving on the Board of Directors of the National Basketry Organization (2011-2014), the River Arts District (2013) and as an instructor at schools, guilds, and conventions around the country including Arrowmont, the John C. Campbell Folk School and the North Carolina Basketmakers Association. He is also the founder of an international arts organization, **The Worship Studio**, committed to helping artists make the connection between creativity and spirituality.





### *Class Tools*

Basic tool requirement unless otherwise stipulated in class description: Basketry shears or scissors, tape measure, pencil, clothes pins, awl or similar tool, sharpened knife and contained for water. Many items will be available through convention vendors.

### *Shipping*

Packaging Express will be available Sunday morning from 8:30am - 1:00 pm in the hotel lobby to handle your shipping needs.

### *Seminars*

**SM1 Thursday 1:00 pm - 3:00 pm**

**Alma Lambert**

**Cost \$15.00**

### **Basket Weaving Basics 101**

New weavers, this is for you. Learn how to stop and start weavers, start and end rim lashing, learn tips for cutting and tucking spokes and what to do if the spoke is cut too short to tuck. Shaping, recognizing errors, basket terminology, weaving techniques and helpful tips will be discussed and some will be demonstrated.

Each participant will receive a notebook of all materials covered in the seminar. Students may bring an unfinished or "problem" weaving project if desired.

**SM2 Thursday 1:00 pm - 2:00pm**

**Laura Lee Zanger**

**Thursday 2:00 pm- 3:00 pm**

**Cost: \$20.00**

### **Space Dying Seminar**

Ever wonder how to space dye reed or cane for those lovely blending colors? Here's your chance. Each step of the process will be explained and demonstrated. You will see the effect compared to a color wheel. The book Spaced Out on Dye is included as a hand out.



THMB01 Thursday 1:00pm-3:00pm

**Fun with Hair**  
**Tonya Cubeta**  
 Melbourne, FL

Students will choose "2" of the hair accessories pictured. You will weave different types of knots/ braids using many materials such as reed, but- tons, jute and rope.

**2 hours**  
**All Levels** **\$25**



THMB02 Thursday 1:00pm-3:00pm

**Whimsical Pins**  
**Annetta Kraayeveld**  
 Beloit, WI

This little fun lapel pin is woven with black ash and lashed with waxed linen. The basket is woven continuously with a 2/1 twill and embellished with fun buttons. Your class kit will include materials for two pins; one will be completed in class. Bring a small packer, diagonal cutters and beading light/ magnifier.

**2 hours**  
**All Levels** **\$36**



THMB03 Thursday 1:00pm-3:00pm

**Scraps**  
**Kay Harriger**  
 Magnolia, NC

Decorate a painted piece of cardboard from scraps of weaving material. You made the big one last year with Tonya Cubeta. Thank you Tonya for letting me downsize it. You will have lots of things to choose from.

**2 hours**  
**All Levels** **2.5" x 3.25"**  
**\$10**



THMB04 Thursday 1:00pm-3:00pm

**Basket Case Ladies**  
**Elaine Sinclair**  
 Salem, WV

Students will create arms, legs and hair for these gourd ladies. Faces and dresses will be hand painted before class. Pin backs, pearl necklaces and/ or earrings will be available. All accessories will be furnished and will vary. Two gourd ladies in kit. Need needle nose pliers.

**2 hours**  
**All Levels** **1" x 2.5"**  
**\$25**



THMB05 Thursday 1:00pm-3:00pm

**Stitch in Time**  
**Mary & Jimmie Earl McKinzie**  
 Washington, IL

This basket is handy sitting next to your favorite easy chair to keep pins, needles and a few bobbins of thread ready to use. Dyed reed for continuous weave will be offered in various colors to coordinate with the pin cushion, pin and thread bobbins in each kit.

**2 hours**  
**All Levels** **3.5" x 7.5" x 2"**  
**\$27**



THMB06 Thursday 1:00pm-3:00pm

**Flat Cherry Basket**  
**Ruth Garcia**  
 Westerly, RI

The basket is made of cherry strips accented with a handle that is braided of round reed. The flat basket can be used as a Christmas ornament, a magnetic memo holder, or even a name tag. Bow and magnet are included.

**2 hours**  
**All Levels** **3" x 4"**  
**\$18**



THMB07 Thursday 1:00pm-3:00pm

***Decorative Handle Wrap***  
**Techniques**  
**Pati English**  
 Seneca, SC

Select two oak handles in various sizes and wrap with your choice of techniques. Finish two designs in class from the five found in the pattern: Chevron Arrow Wrap, newest Diamond Wrap design, double and triple strand Cane Braid Wrap.

2 hours                      12" x 14"  
**All Levels**                      **\$37**



THMB08 Thursday 1:00pm-3:00pm

***Cotton Cord Bracelet***  
**Linda Scherz Allen**  
 Rome, NY

This is a fun and quick bracelet to make. The cotton cord feels good to work with and shows the design well. Emphasis on tension and technique. Students will have materials to make two - complete one in class and a second later. Tools: tape measure, small sharp scissors, needle with large eye, magnifying glasses and personal light helpful.

2 hours                      0.25" x 7" x 9"  
**All Levels**                      **\$22**



THMB09 Thursday 1:00pm-3:00pm

***Best Wishes Necklace Basket***  
**Anne Bowers**  
 Kearneysville, SC

This unique basket is constructed around a chicken wishbone that is drilled. Students insert spokes, weave with 3 colors of waxed linen and make a rolled border. Then a neck cord is braided and various beads are added for embellishment. A reed conversation piece.

2 hours                      1.5" x 2"  
**All**                      **\$28**



THMB10 Thursday 1:00pm-3:00pm

***Mini Arrows***  
**Candace Katz**  
 Springdale, AR

Due to the time element, this basket will have the base secured to a mold with spokes placed by the instructor before the start of class. Weaving techniques include start/stop, triple twining, twill pattern 3-2, traditional rim and maple strips woven as arrows. Color choices will be available.

2 hours                      7" x 4.5"  
**All Levels**                      **\$26**



THMB11 Thursday 1:00pm-3:00pm

***Hummingbird***  
**Debbie Hurd**  
 Garfield, AR

Quick fun basket to weave. Woven on a D handle using basic weaving techniques. The flower and hummingbird are added after the basket is finished.

2 hours                      3" x 3.5" x 6"  
**All Levels**                      **\$20**



THMB13 Thursday 1:00pm-3:00pm

***Karen's Card/Pencil Holder***  
**Julie Kleinrath**  
 Grand Junction, CO

Woven on a drilled wooden base, this basket features two baskets woven on same base "On Point". The front basket starts short in the front and gradually goes up in the back making it the perfect size to hold business cards. The back basket starts where the short one stops and goes up to a point in the back making it the perfect size to hold pencils.

2 hours                      6.5" x 6.5" x 5.5"  
**All Levels**                      **\$35**



THMB14 Thursday 1:00pm-3:00pm

**Wheat Weaving**  
**JoAnn Kelly Catsos**  
 Ashley Falls, MA

Learn the ancient art of wheat weaving - braiding stalks of wheat and shaping them into designs. Focus will be on the "five close plait" and making a heart shaped "mordiford", a good luck symbol. Students will make 3 items and accent them with ribbon. Sharp scissors needed.

2 hours                                      10" x 8"  
**All Levels**                                      **\$20**



TH402 Thursday 4:00pm-9:00pm

**Headbands with a Twist**  
**Tonya Cubeta**  
 Melbourne, FL

Learn to weave a triple weave braid on a headband. Different widths of headbands available. Be the first to learn my original headband creations. Materials for two headbands.

4 hours                                      Std headbands  
**All Levels**                                      **\$28**



TH405 Thursday 4:00pm-9:00pm

**Harmony Vessel**  
**Denise Anthony**  
 Robbinsville, NC

Beginning on a slotted wood base, students will triple twine with a step-up. Students will choose one of 3 continuous options for this fast and easy project (all included in written pattern). Students will stencil their own buttery soft leather and add a decorative glass bead tassel before learning to bind in a different manner.

4 hours                                      9" x 6"  
**Beginner/Intermediate**                                      **\$43**



TH409 Thursday 1:00pm-3:00pm

**India Bangles**  
**Pam Talsky**  
 Waterford, WI

Learn to coil two bangles in your choice of over 20 colors. Start with a wire form that fits you. This bracelet idea came to me when asked to teach in India. Comfortable to wear and fun to stack.

4 hours                                      7" x 4.5"  
**All Levels**                                      **\$30**



TH411 Thursday 4:00pm-9:00pm

**Spring Fling**  
**Debbie Hurd**  
 Garfield, AR

Great useful basket for any weaver! Woven with basic techniques and color overlays added to middle section. A wooden insert with sections makes it very functional. Color choices at class time. TOOLS NEEDED: small bent tip packer.

4 hours                                      6" x 9" x 6"  
**All Levels**                                      **\$28**



TH415 Thursday 4:00pm-9:00pm

**Small Nantucket Sand Pail**  
**Jan Beyma**  
 Wilmington, NC

Students will learn how to set up a Nantucket basket, and learn how to twill weave. You will use a cheater rim to finish the basket and the handle will be attached with bone knobs. Basket is woven over a plastic mold. Stakes and weavers will be cane. Base, cheater rim, handle and shovel are oak. All wood parts will be prefinished.

4 hours                                      5.5" x 5.25"  
**Intermediate**                                      **\$70**





TH418 Thursday 4:00pm - 9:00pm

***The Herb Basket*****Billy Owens**

Aurora, MO

Made of hand split white oak, the herb basket has a woven oak "herringbone" bottom and 1 handle also made of oak. I will share how I select my trees, how I hand split the material making it usable for weaving, and the Owens method of rimming.

4 hours  
All Levels  
8" x 8" x 4.5"  
\$60



TH422 Thursday 4:00pm-9:00pm

***Papyrus*****Annetta Kraayeveld**

Beloit, WI

A wonderful introduction to weaving with painted paper! Basket is woven with start stop rows on a mold so shaping is a snap. A layered rim is lashed with waxed linen. Teacher will provide a wide choice of paper (painted and pre-cut) as well as embellishments. Materials for two baskets provided. Bring sharp scissors, tip packer and #22 tapestry needle.

4 hours  
All Levels  
2.75" x 4.5" x 1.75"  
\$38



TH424 Thursday 4:00pm-9:00pm

***Tools Tools Tools*****Kay Harriger**

Magnolia, NC

This little basket has a wood bottom and is woven from scraped cane. The stakes will be inserted. Decorated with mini tools. Lashed with waxed linen. All tools used will be supplied. An ott lite may be useful.

4 hours  
All Levels  
2.5" x 1" x 2"  
\$30



TH433 Thursday 4:00pm-9:00pm

***Kerri Kline*****Elaine Sinclair**

Salem, WV

Student will weave base then "choose" a 2" hand marbled strip. Students will also get to choose the color they want to emphasize. Lots of color and different sizes of reed will be available for you to choose to learn to create a "plaid" effect on your basket. Shaker tape handles.

4 hours  
All Levels  
5" x 13.5" x 12"  
\$60



TH434 Thursday 4:00pm-9:00pm

***Random Weave Bird Nest Basket*****Pamela Zimmerman**

Washington, NC

Using readily available, richly textural wild material, we will weave bird's nest forms. Class will include information on finding and processing wild materials, including vines that commonly grow in many gardens. Properties of the materials and how they are best woven will be included in pattern and discussion. Finish off your wild nest egg with some moss and faux eggs.

4 hours  
All Levels  
8" x 7" x 4"  
\$50



TH440 Thursday 4:00pm-9:00pm

***Angel Cut-out Bowl*****Kathy Garren & Lisa Sowers**

Chocowinity, NC

Learn to coil a pine needle rim with wax linen thread on a lovely hand thrown pottery bowl with angel cutouts. Learn to add glass beads between the rows of coils to embellish the rim. You will have the option of creating your own design with choice of rim designs, and other cut out designs which include: turtles, diamonds, oak leaves, hearts, crosses.

4 hours  
Intermediate  
5" x 4.5"  
\$65



TH447 Thursday 4:00pm - 9:00pm

*Square Double Wall*  
Peggy McCarson  
Simpsonville, SC

Learn to weave a double wall basket with the base spokes forming the two walls. The 2 over 2 patterned base has two colors- dyed and natural. The inner walls use the dyed spokes; the outer walls use the natural spokes. Both have accented rows. The rim is a blanket stitch with waxed linen.

4 hours  
All Levels  
7" x 7" x 4.5"  
\$30



TH451 Thursday 4:00pm-9:00pm

*Mini Vase*  
Ruth Garcia  
Westerly, RI

This vase is woven on a mini glass vase that will remain in the vessel. Students begin with a cherry base into which cane staves are inserted and then weave with a fine cane in a twill pattern. A one-piece cherry rim completes the vase. A tool kit is provided.

4 hours  
Intermediate  
3.5" x 2.25"  
\$30



TH456 Thursday 4:00pm-9:00pm

*Little Dresser*  
Joni-Dee Ross  
Summerfield, NC

The Little Dresser Nantucket has a base, slip on rim, lid and knob that are hand turned in North Carolina. Cherry and walnut will be available at class and each kit will be unique. Exotic wood kits will also be available. Tips will be discussed and demonstrated in class to make this class easy and fun.

4 hours  
All Levels  
3.5" x 3.25"  
\$50



TH458 Thursday 4:00pm-9:00pm

*Kaleidoscopes*  
Trista Rothgerber  
Santa Claus, IN

This is a fun, easy project to weave. The large scope contains faux jewels floating in liquid for a stunning effect. The small scope contains a clear lens that turns everything it is pointed towards into a kaleidoscopic image. A variety of color choices and weaving patterns will be available to choose from.

4 hours  
All Levels  
Two different sizes  
Lg. \$44, Sm. \$32



TH460 Thursday 4:00pm-9:00pm

*Salesman's Sample Picnic*  
Nathan Taylor  
Hohenwald, TN

Basket is woven with hand pounded black ash. The slotted rim, lid and handles are American cherry. This basket is the size and type of sample a traveling salesman would have carried to represent the actual full sized basket. The three-piece lid is intricate and it is a challenge to attach the tiny brass hinges with the miniscule brass nails. We have already done this for you.

4 hours  
All Levels  
3.75" x 5.25" x 2.58"  
\$89



TH462 Thursday 4:00pm-9:00pm

*Personalized Gift Card Ornaments*  
Candice Williams  
Burgaw, NC

Kit includes materials to make both card holders. Over/under weaving and lashed with waxed linen. Decorated with polymer clay tie-on that can be personalized with sharpie marker. Great for gift cards or candy.

4 hours  
All Levels  
1.5" x 3" x 4"  
\$33



TH467 Thursday 4:00pm - 9:00pm

**Swirling Necklace**  
Linda Scherz Allen  
Rome, NY

A fun necklace to weave. With two colors waxed linen twine your swirl, adding beads to accent, and complete with cotton neck cord. Emphasis on shape, tension and techniques. Prior twining experience helpful. Tools: tape measure, small sharp scissors, bead tray, needle with large eye, waxed linen packing tool, magnifying glasses and personal light is helpful.

4 hours                      2.25" diameter  
**Beginner/Intermediate      \$17**



TH472 Thursday 4:00pm-9:00pm

**Snowman Hat**  
Sharon Klusmann  
Talmadge, OH

This unique top hat has a thin 9" round base for its brim with holes drilled in a circle for the spokes of your hat body. Weaving taught is continuous over/under, twining, a simple twill and ending round reed spokes. Included is a can of burgundy spray paint. Decorate with white fur, black felt, burlap bow, greenery, berries, pine cones, and bells.

4 hours                      7.5" x 8"  
**Intermediate                      \$39**



TH476 Thursday 4:00pm-9:00pm

**Table/Napkin Caddy**  
Judy Wobbleton  
Williamston, NC

Students will work with an octagon shaped slotted wood base attached to a lazy susan to create a sturdy useful basket. This is a fun basket to weave as students achieve straight sides as the basket is woven. Pictured napkins and shakers are for display only.

4 hours                      5.5" x 8"  
**All Levels                              \$38**



TH478 Thursday 4:00pm-9:00pm

**Small Cross-Handled Sweetgrass Basket**  
Barbara McCormick  
McClellanville, SC

Learn the technique of adding a cross-handle to your traditional sweetgrass basket. Baskets are coiled of sweetgrass, long leaf pine needles and lashed with palmetto strips. Techniques taught will enable students to design a variety of shapes and sizes of sweetgrass baskets. NO WATER REQUIRED!!! Scissors recommended.

4 hours                      varies  
**All Levels                              \$50**



TH479 Thursday 4:00pm-9:00pm

**Oriental Inspiration**  
Debbie Wilson  
Travelers Rest, SC

This basket is started with slots cut into a gourd. Flat oval reed is inserted into slots to use as stakes. Round reed is twined to the top, using the gourd as a form as well. Coiling with larger round reed finishes the rim. Tension and shaping will be taught as well as a simple coiled technique with a coil overlay to end.

4 hours                      6.5" x 7" x 6.5"  
**Beginner/Intermediate      \$45**



TH480 Thursday 4:00pm-9:00pm

**Bark and Vine Twine**  
Matt Tommey  
Fairview, NC

Students will work with kudzu, poplar and mimosa bark to create a basket using twining, cross stitch and folded bark border techniques.

4 hours                      4" x 2"  
**Beginner/Intermediate      \$45**





TH484 Thursday 4:00pm - 9:00pm

***Framed Mat***  
Gina Kieft  
Rothbury, MI

This is a fun twill made with two different sizes of black ash in natural and dyed. Students will have their choice in color to weave this beautiful wall piece. Learn to follow a graph while keeping the sides of the piece square to fit in the handmade barn wood frame. The frame is included in the class.

4 hours                      11" x 9" Framed  
**All Levels**                      **\$40**



TH486 Thursday 4:00pm-9:00pm

***Card Caddy***  
Kathy Tessler  
Howell, MI

Weave an ash pouch over a mold you keep. The card caddy features your choice of ash, cane, and leather weavers with bead accent. Perfect for keeping track of your room key and credit card. All tools provided.

4 hours                      .25" x 3" x 3.5"  
**Beginner/Intermediate**                      **\$25**



TH488 Thursday 4:00pm-9:00pm

***Diamond Footstool***  
Steve Atkinson  
Lennon, MI

This diamond design goes with any décor. The seat is woven with the diamond design and the underside is woven in checkerboard. You will be learning two different weaves. Choice of many colors. NOT TO BE USED AS A STEPPING STOOL. Pine frame comes stained, varnished ready to weave on.

4 hours                      12.5" x 13" x 12"  
**All Levels**                      **\$49**



TH4103 Thursday 4:00pm-9:00pm

***Carolina Angel Basket***  
Becki Newsome  
Swansboro, NC

This basket is good for a beginner or someone working on shaping skills. Basket is woven on a slotted wooden base with an attached handle. A choice is given of smoked reed with natural accent rows or natural with smoked accent rows. There is also a choice of color in the angel's accent berries.

4 hours                      13" x 10" x 19"  
**Beginner**                      **\$50**



TH606 Thursday 3:00pm-10:00pm

***Sassy Gourd Basket***  
Judy K. Wilson  
Palmetto, GA

Learn to coil with waxed silk threads. Emphasis will be on hand skill facets of coiling, neatness, tension and over all look. Gourds will be cleaned, all holes drilled, stained & ready. Hand cut leather lacing embellishes the side along with copper discs. Students need to bring: small embroidery type scissors and small awl.

6 hours                      3" / 4" x 2.5"  
**Intermediate**                      **\$27**



TH608 Thursday 3:00pm-10:00pm

***Beaded Cascade***  
Lynn Hoyt  
Blounts Creek, NC

You will learn to bead coil a beautiful cascading rim as the crowning glory for this elegant gourd bowl. It starts with an organically grown prepared gourd from my garden. Coordinating color choices will be available. Gourd prep discussed. Bring needle-nose pliers. Enjoyable, relaxing.

6 hours                      2.25" x 4.75"  
**All Levels**                      **\$45**





TH611 Thursday 3:00pm - 10:00pm

**Teacher's Tote Basket**  
Dianne Gleixner  
Brookfield, WI

Students will insert dyed reed spokes into an oval slotted wood base, do start/stop weaving, paired triple twining, and concentrate on shaping. Leather handles are added before rimming this sturdy and useful basket. Some color choices will be available at class time. Will need quick curing glue.

6 hours  
Intermediate 9" x 14" x 11" \$60



TH620 Thursday 3:00pm-10:00pm

**Heidi**  
Sandy Whalen  
Milford, MI

A fun little oval willow basket that has a different foot border using the side spokes. Red willow is used for an accent. Students will learn how to weave a braid border - hence the name of the basket. Special tools: 1 large beach or bath towel.

6 hours  
Intermediate 8" x 11" x 10" \$65



TH631 Thursday 3:00pm-10:00pm

**Phoebe Spiral**  
Jerry Maxey  
Piedmont, SC

Walnut base and ring with #5 round spokes, #3 round weavers and seagrass. Students will learn wicker weave techniques including weaving with 3, 4, and 5 weavers, adding and subtracting spokes to alter basket shape and patterns.

6 hours  
Intermediate/Advanced 11" x 6" \$70



TH632 Thursday 3:00pm-10:00pm

**Basketmaker Bracelet**  
Barb McNally  
Indianapolis, IN

What are you? A basketmaker, a basket lover, or a basket case? You decide what you want your bracelet to say. This bracelet is done in odd count peyote stitch using 11/0 Japanese beads, and will be finished with sterling silver crimp bars and clasp. A simple easy project for everyone. Battery powered ott lights will be provided for use in class.

6 hours  
All Levels 0.50" x 6-7" \$34



TH635 Thursday 3:00pm-10:00pm

**Easter/Baby Shower Basket**  
Char Ciammaichella  
Aurora, OH

Basket is started by inserting natural spokes into a wood base. Techniques include 4-rod twining, 3-rod twining, start/stop weaving and placing overlays on and beside the spokes. Colors can be customized for an Easter basket or a baby shower for a boy or girl.

6 hours  
All Levels 10" \$42



TH640 Thursday 3:00pm-10:00pm

**Wine, Oil & Vinegar Divided Basket**  
Pati English  
Seneca, SC

Oak wood base and attached wooden divider, chase weave to secure 1/4" flat oval stakes in alternating wine and navy with color choices available. Twill weave with flat oval reed & triple twine/three-rod wale for two round reed outside spiral accents. Finish with cable stitch lashed border and twisted dyed round reed rim filler.

6 hours  
Intermediate 3.4-4" x 8" x 11.5" \$79



TH646 Thursday 3:00pm - 10:00pm

**Scenic West Virginia**  
**Anne Bowers**  
 Kearneysville, WV

The bases on the oval baskets were created using photography by WV photographer Frank Ceravalo. Students will insert spokes (colored coordinated to match photo in base), weave a foot, weave, add beads and do a rolled border. There will be choices of different photographs.

6 hours                      9" x 12" x 6"  
**Intermediate/Advanced**                      **\$70**



TH647 Thursday 3:00pm-10:00pm

**Wooden You Love to Curl?**  
**Alice Ogden**  
 Franklin, NH

Low black ash basket woven with 3/8" weavers and "Elm Bark spacer". Curls are added to highlight this perfect counter basket. Hand shaved white rims are added and single lashed or double if preferred and time permitting. Woven over a wooden form.

6 hours                      7" x 12.5" x 3"  
**Beginner**    **\$85**



TH631 Thursday 3:00pm-10:00pm

**Caprice**  
**Flo Hoppe**  
 Rome, NY

Caprice is an oval wall basket woven with smoked and natural reed. A round to oval base is bi-spoked then woven with smoked reed in 3-rod wale and 2-color twining.. Smoked spokes are added between the original spokes and a flared foot is woven at the bottom. The back is raised with 3 sets of figure-8 weave. A 3-row rolled border finishes off the basket.

6 hours                      9" x 12" x 7.5"  
**Intermediate/Advanced**                      **\$72**



TH654 Thursday 3:00pm-10:00pm

**Flying Arrows**  
**Candace Katz**  
 Springdale, AR

This very useful basket starts on an oval ash base and uses dyed hamburg cane, with dyed maple strips to match. With basic weaving techniques used to complete the basket the emphasis will be placed on creating the wrapped and braided handles.

6 hours                      6.5" x 13.5 x 5"  
**All Levels**    **\$42**



TH656 Thursday 3:00pm-10:00pm

**Windows**  
**Eileen LaPorte**  
 Washington, MI

This basket begins on an oak base and is woven over a clear acrylic bowl to achieve the shape. Using dyed and natural spokes you will twill weave to create the look of windows. The acrylic bowl will be yours to use as a liner when you finish the basket. There will be several color choices for the dyed spokes

6 hours                      5" x 11.5" diameter  
**Beginner/Intermediate**                      **\$68**



TH660 Thursday 3:00pm-10:00pm

**Birds Nest**  
**Eric Taylor**  
 McMinnville, TN

Two rows of curls and a wide ash band adds a new twist to one of Eric's baskets. This basket is mold woven with black ash and finished with nailed cherry rims.

6 hours                      3" x 3.5"  
**Intermediate**    **\$85**



TH663 Thursday 3:00pm - 10:00pm

***Friendship Basket***  
**JoAnn Kelly Catsos**  
 Ashley Falls, MA

This eye-catching basket features stakes that are two different widths and woven of black ash splint and elm bark over a wooden mold. The maple rims of this low cathead basket are double lashed. This basket was originally designed as a thank you for friends that allowed us to harvest ash and elm on their property.

6 hours                      2.5" x 6"  
**Beginner/Intermediate**      **\$60**



TH670 Thursday 3:00pm-10:00pm

***Hexagon Stud***  
**Sandra Atkinson**  
 Lennon, MI

The unique base of this basket is 6-sided hexagon, woven in smoked, natural and dyed reed, can, two wooden swing handles with choice of dark brown or dark green accents. The studs create a stunning accent, but does take hand strength. Studs are optional.

6 hours                      7.75" x 15"  
**Intermediate**                      **\$65**



TH677 Thursday 3:00pm-10:00pm

***"Hareless"***  
**Karen Maugans**  
 Waynesboro, VA

Easter basket with bunny silhouettes attached to the D handle - therefore the name "Hareless". A woven round basket using a 10 x 14 D handle. Stop/start weaving using contrasting colors. The Cherokee wheel design is the focal point. Fun to make and design!

6 hours                      14" x 10"  
**All Levels**                              **\$48**



TH679 Thursday 3:00pm-10:00pm

***Tinkerbell's Pixie Pail***  
**Julie Kleinrath**  
 Grand Junction, CO

Woven on a 3" round base in a triple twine pattern using both round reed and waxed linen. The upper portion of the basket is woven with a shadow weave adding waxed linen to each side of the weavers. The basket is finished with a hand carved wood handle and waxed linen lashing. Many colors available.

6 hours                      7.5" x 4.5"  
**Intermediate**                      **\$35**



TH684 Thursday 3:00pm-10:00pm

***Mallory Cove***  
**Marilyn Wald**  
 Riga, MI

Mallory Cove has a wooden base to begin the basket. Shaping is the element needed for a successful basket. There will be discussion and techniques for shaping a basket from a larger circumference to a smaller one successfully. The basket is highlighted with a smocking design done in a variety of colors which will be available.

6 hours                      9" x 9" x 10"  
**All Levels**                              **\$45**



FR407 Friday 8:00pm-12:00pm

***Sweetgrass Ring Basket***  
**Lynn Hoyt**  
 Blounts Creek, NC

This small vibrant oval basket is perfect for rings, pills or small trinkets. You'll work with fragrant sweetgrass, coiling on a hand formed stoneware basket center. Shaping, needle angle and back-stitching are emphasized. Finish one and start on another - kit includes materials for 2 baskets. Color choices.

4 hours                      2.75" x 2.25" x .5" tall  
**All Levels**                              **\$40**





FR417 Friday 8:00am - 12:00pm

***The Daisy Basket***  
**Billy Owens**  
 Aurora, MO

Made of hand split white oak the Daisy Basket has a woven oak "herringbone" bottom and one handle also made of oak. I will share how I select my trees, how to hand split the material making it usable for weaving, and the Owens method of rimming.

4 hours                      6" x 6" x 6"  
**All Levels**                      **\$60**



FR426 Friday 8:00am - 12:00pm

***Color***  
**Kay Harriger**  
 Magnolia, NC

Woven on a wood base that is a continuous weave. Has a wrapped waxed linen base. This little basket is easy for a beginner. All tools used will be supplied. It is made of scraped cane. An Ott lite is useful.

4 hours                      1.5" x 1.5" x 2"  
**All Levels**                      **\$25**



FR435 Friday 8:00am - 12:00pm

***Treasure Bottle***  
**Pamela Zimmerman**  
 Washington, NC

Adorable tiny glass bottle will be woven with fine waxed linen and beads. Finish into a necklace for filling with tiny treasures, perhaps sand from the beach? Cork it and wait for compliments! Bring sharp scissors, recommend a light and/or magnifier. Bottle size and shape may vary from sample. As seen in Belle Armoire Jewelry Magazine.

4 hours                      1.5" x 5/8" diameter  
**All Levels**                      **\$48**



FR438 Friday 8:00am - 12:00pm

***3" Snippet Basket w/Lid***  
**Kay Kjeldgaard**  
 Bloomington, IL

This round basket has a 1" acrylic Nantucket scrimshaw design in its maple base. It has a magnet on the bottom and in the wood piece that goes under your work. The basket will rest on your frame to hold threads, tools or candy. It is woven on a mold with chair cane and has maple wood parts.

4 hours                      3.75" x 3.5" diameter  
**Beginner/Intermediate**                      **\$88**



FR445 Friday 8:00am - 12:00pm

***Watercolor Paper Vessel***  
**Carolyn Kemp**  
 Gloucester, ME

This unique basket is woven from hand painted watercolor paper (painted by teacher). Students will learn techniques that are unique to weaving with paper. Shaping is stressed. Students will receive enough paper for second basket to take home.

4 hours                      3.25" x 3.25" x 4.5"  
**Intermediate**                      **\$22**



FR450 Friday 8:00pm-12:00pm

***Cane Bracelets***  
**Ruth Garcia**  
 Westerly, RI

Students will have an option of either black or brown Hamburg cane for spokes. Natural cane will be used for the weavers. There will be several patterns to choose from, or students can weave a pattern of their own design. A tool kit is provided.

4 hours                      1" x 6.25"  
**All Levels**                      **\$25**



FR453 Friday 8:00am-12:00pm

***Cottage Market***  
**Dona Nazarenko**  
 Tunbridge, VT

After weaving with natural reed you will add your ribbon and insert the swing handle to this nice size market basket which you will find many uses for. Tips shared on doing bases and shaping up the sides to make weaving easier for you! Some ribbon choices available.

4 hours                      5.5" x 11" x 12.5"  
**Beginner/Intermediate      \$42**



FR454 Friday 1:00pm-5:00pm

***Birch Bark Memo Holder***  
**Dona Nazarenko**  
 Tunbridge, VT

Your note paper will look very pretty inside this uniquely woven birch bark project. Vary the colors of the paper birch as you weave, embellish the rim with pine needles as you stitch all around using waxed linen. This continues my "Bark of Colors" series.

4 hours                      4.25" x 4.25" x 4.25"  
**All Levels                              \$48**



FR459 Friday 8:00am - 12:00pm

***Hyannis Picnic Basket***  
**Nathan Taylor**  
 Hohenwald, TN

This is my most popular class ever. It is an all wooden basket. The body is woven of American ash with American cherry rims, lid and handles. The handles and lid are attached with brass fittings. Students will learn good methods for starting molded baskets as well as attaching hinges and slotted rim techniques.

4 hours                      6" x 9.5" x 4.75"  
**All Levels                              \$99**



FR463 Friday 8:00am-12:00pm

***Corner Stripes***  
**Candice Williams**  
 Burgaw, NC

Basket is woven on a wood base that fits into a corner. Basket is woven with over/under weaving that creates stripes.

4 hours                      11" x 14.5" x 4.5"  
**All Levels                              \$46**



FR465 Friday 8:00am-12:00pm

***Shaker Tape***  
**Jean Reed**  
 Hill, NH

Oak footstool with satin finish will be used to create this very unusual shaker tape pattern in colors of your choice. Bring scissors and tape measure to class.

4 hours                      13" x 16" x 13"  
**All Levels                              \$95**

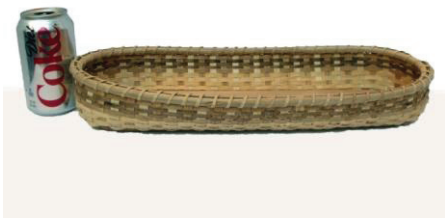


FR468 Friday 8:00am - 12:00pm

***Seaglass***  
**Gail Hutchinson**  
 Milton, WV

Weave over a class mold to create the perfect shape of this basket. Learn three rod wale with a step-up. Fun and fast.

4 hours                      3" x 5.5"  
**All Levels                              \$99**



FR469 Friday 1:00pm-5:00pm

**All American Bread Basket**

**Gail Hutchinson**  
Milton, WV

This basket is woven on a hardwood base with 100% American made materials. You will be weaving two bread baskets with all natural white oak, walnut, American elm and red elm. No two bases are the same.

4 hours  
**Intermediate**                      7" x 17" x 3"  
**\$77**



FR470 Friday 8:00am - 12:00pm

**Little Drummer**

**Sharon Klusmann**  
Tallmadge, OH

This adorable Christmas basket begins with a slotted base. Learn to create a handle with round reed that is inserted into the base, start/stop weaving, triple twining, decorative accents with chair caning, attaching a string of bells and a traditional rim. Woven with all smoked, red and hunter green reed and embellished with greenery, pip berries & more bells.

4 hours                                      7.5" x 8"  
**Beginner/Intermediate**                      **\$30**



FR471 Friday 1:00pm-5:00pm

**Old Time Candle**

**Sharon Klusmann**  
Tallmadge, OH

Fashioned after the hurricane lamp, basket features a slotted base, start/stop weaving, triple twining, creating a sturdy loop handle inserted from the base and a braided rim. Braided rim will be completed in class. Included with the basket is filler, pip berries, pine cones and a battery operated candle.

4 hours                                      2.5" x 6"  
**intermediate**                                      **\$34**



FR475 Friday 8:00am-12:00pm

**Maine Coon Wall Basket**

**Judy Wobbleton**  
Williamston, NC

Woven in the style of a cathead, this sturdy wall basket is all about shaping. Basket is accented with colored reed and finished with a sturdy wooden handle.

4 hours                                      5.5" x 8" x 9.5"  
**Beginner/Intermediate**                      **\$30**



FR489 Friday 1:00pm-5:00pm

**Double Deck Footstool**

**Steve Atkinson**  
Lennon, MI

This double-decker footstool is perfect for holding your newspapers and magazines under the seat. Looks great in any décor with the seat woven in checker board or the diagonal. Twill weave, using shaker tape or nylon webbing. Choice of many colors. The pine stool comes stained, varnished, and ready to weave. Not to be used as a stepping stool.

4 hours                                      12" x 24.75" x 20"  
**All Levels**                                      **\$75**



FR493 Friday 8:00am - 12:00pm

**Lighted Wine Bottles**

**Sandra Atkinson**  
Lennon, MI

A fun and easy class. Use one of the patterns included or get creative and design one of your own. Learn the basic weaving techniques, a couple of tricks to make it all fit. Class includes all materials for one bottle: drilled wine bottle, reed and lights.

4 hours                                      12" x 3" base  
**All Levels**                                      **\$24**





FR604 Friday 9:00am - 4:00pm

**Flat Ribbed Shadow Box**

**Tony Cubeta**

Melbourne, FL

We have a flat rib basket using double zero round reed. This is an unusual weaving of a rib basket. Basket is then framed in a shadow box and decorated with buttons, and paper.

6 hours  
All Levels  
9" x 9"  
\$48



FR605 Friday 9:00am - 4:00pm

**Casey's Countertop Storage**

**Peggy Adelman**

Greensboro, NC

An all reed basket that uses multiple sizes and colors of reed. Color placement creates the plaid design. Shaping is an important part of this basket. The basket should have sharp corners and go straight up. You will learn how to make a triple twine rim. The base is filled.

6 hours  
All Levels  
10.5" x 14" x 4.5"  
\$42



FR609 Friday 9:00am - 4:00pm

**Oak Island Tote**

**Debbie Hurd**

Garfield, AR

Woven on a D handle with lots of techniques to learn or practice. Techniques include: start stop weaving, continuous weave, French randing, Cherokee wheels, triple twining, side embellishments and a lattice bottom. Woven in smoke and color choice at class time. TOOLS NEEDED: small bent tip packer.

6 hours  
intermediate  
8.5" x 10" x 14"  
\$42



FR610 Friday 9:00am-4:00pm

**Nantucket Swirl Bowl**

**Jan Beyma**

Wilmington, NC

Students will learn how to set up a Nantucket basket and learn how to twill weave. You will also use a cheater rim to finish off the basket. Basket is woven over a plastic mold. Stakes and weavers will be cane. Base and cheater rim is cherry. Base and rim will be prefinished. (mold not included in class).

6 hours  
Intermediate  
5" x 7"  
\$65



FR612 Friday 9:00am - 4:00pm

**Arctic Mist**

**Dianne Gleixner**

Brookfield, WI

Weaving over a class mold, students will insert dyed spokes into a slotted wood base, triple twine, and then insert a second, narrower set of spokes. The main body is woven using stacked weavers in a twill weave. Attention to detail is a must because an intentional mistake is made every row so that the twill design works out.

6 hours  
Intermediate/Advanced  
9" x 13" x 7"  
\$52



FR618 Friday 9:00am - 4:00pm

**Santa's Cookies**

**Elaine Sinclair**

Salem, WV

Begin this wonderful whimsical basket using a 5.5" wood base. Learn twining and shaping. The second basket is the hat. After creating Santa's head, you will have fun making a hat to fit. A re-woven border will finish off the hat to make it more beautiful. Face features will be taught. All decorations will be furnished and may vary.

6 hours  
Intermediate  
6" x 14" x 26" circle  
\$60



FR626 Friday 9:00am - 4:00pm

***Favorite Fruit Bowl***  
**Kathy Garren & Lisa Sowers**  
 Chocowinity, NC

Create a beautiful bowl for fruit or bread combining pine needles and pottery. Learn to coil a pine needle rim using the basic stitch with waxed linen thread. Learn how to add walnuts between the coils for embellishment. The bowl is hand thrown pottery finished in light blue glaze with a brilliant cobalt center. Scissors are the only tools needed.

6 hours                      4.5" x 8" diameter  
**All Levels**    **\$70**



FR639 Friday 9:00am - 4:00pm

***Triple Braid Cathead Basket***  
**Pati English**  
 Seneca, SC

A 4.5" square base starts this cathead basket that grows to a 9" diameter. Start/stop weave with flat oval reed, then learn to triple strand braid weave with dyed and natural round reed creating two rows of braid. Finish with cable stitch rim lashing and a notched flat top handle with hand grip complementing the cathead base shape.

6 hours                      6" x 9.5" w/handle  
**Intermediate**    **\$68**



FR649 Friday 9:00am - 4:00pm

***Music Depository***  
**Peggy McCarson**  
 Simpsonville, SC

The base is a 2 x 2 twill using natural and black reeds. The sides are woven with a continuous weave of over 3 under 3. This pattern makes the black spokes hide in the background. Black bushel handles are inserted and 3 pottery music notes (included) decorate the front. Students learn to change from natural to black in the continuous weave.

6 hours                      12" x 9" diameter  
**intermediate**    **\$50**



FR658 Friday 9:00am-4:00pm

***Cheryl's Tote***  
**Becki Newsome**  
 Swansboro, NC

Tote is woven on a slotted wooden base. Three weaving techniques are used in this basket: twill, 3 rod wale using six strands of round reed, and 4 rod wale. The handle is braided black leather 24" long. Close attention is needed while weaving the bi-color 3 rod wale.

6 hours                      12" x 14" x 8.5"  
**Intermediate/Advanced**    **\$76**



FR659 Friday 9:00am - 4:00pm

***Flared Potpourri Sweetgrass Basket***  
**Barbara McCormick**  
 McClellanville, SC

A sweetgrass potpourri basket would make a great gift or perfect addition to your current basket collection. Sweetgrass baskets are made of sweetgrass and long leaf pine needles, lashed with palmetto strips. Techniques taught will enable the student to design a variety of shapes and sizes of baskets. NO WATER REQUIRED.

6 hours                      size varies  
**All Levels**    **\$65**



FR661 Friday 9:00am - 4:00pm

***Miniature Diamond Bureau Basket***  
**JoAnn Kelly Catsos**  
 Ashley Falls, MA

This basket is an exact half scale copy of my original bureau basket. It is chase woven over a prepared black splint over a wooden mold. The stakes are brown heartwood while the white weavers are sapwood. The twilled diamond pattern and single lashed rim add a touch of class. Patience and ash experience is required. Toolbox is provided

6 hours                      2.5" x 4" x 1.5"  
**Intermediate/Advanced**    **\$50**





FR669 Friday 9:00am - 4:00pm

**Mini Apple Basket**  
**Kathy Tessler**  
 Howell, MI

Weave a double base/double wall ash basket over a class mold. Outer wall features unique shifting twill. Emphasis on mold weaving techniques, rim preparation and application. Nimble fingers needed! All tools provided.

6 hours                      2" x 2"  
**Intermediate**                      **\$30**



FR678 Friday 9:00am - 4:00pm

**Special Delivery**  
**Karen Maugans**  
 Waynesboro, VA

So cute for holiday decorations or to collect Christmas Cards. The sleigh will be built on a grooved pine base; stop/start weaving; will decrease to enable the back to be raised. Finish off with attaching pine sleigh runners.

6 hours                      7" x 10.5" x 5.5"  
**All Levels**                      **\$50**



FR682 Friday 9:00am - 4:00pm

**Summer Days Melon**  
**Bonnie Gale**  
 Norwich, NY

Using unpeeled willow, students will choose two prepared and dried hoops. The hoops are attached with God's Eye weaving. Ribs are added progressively into the weaving. This is a fun basket and shaping is on an individual basis for your own unique creation.

6 hours                      9" x 13" x 9"  
**All Levels**                      **\$75**



FR685 Friday 9:00am-4:00pm

**Block Party**  
**Gina Kieft**  
 Rothbury, MI

Woven in black ash, this changing twill project will look beautiful hanging on any wall. Many color choices will be available. Students will learn to follow a graph and be taught techniques to keep the project straight to fit in the hand-made barn wood frame which is included in the class. Twill experience is recommended in order to finish in the time allowed.

6 hours    6" x 6" framed 11" x 11"  
**Intermediate/Advanced**                      **\$52**



FR808 Friday 8:00am - 5:00pm

**Sweet Nancy**  
**Denise Anthony**  
 Robbinsville, NC

Students will begin with a slotted wood base mounted to class mold. We will triple twine and weave the basket. The challenge will be fitting and binding the tooled leather collar to the basket. It is trimmed with a full "Gretchen Rim". This basket features a custom made oak and black walnut handle. If you would like to meet or make peace with Gretchen, then this is the basket for you.

8 hours    11" x 12" w/out handle  
**Intermediate**                      **\$86**



FR819 Friday 8:00am - 5:00pm

**Montana**  
**Annetta Kraayeveld**  
 Beloit, WI

This basket has peaks and valleys in a non-symmetrical design. Students will work to create a cat-head and control shaping while constantly moving from O1/U1 to a complex twill. Basket features dark brown stakes with Dijon colored weavers and rim. Not for the faint of heart, this class is for students who are comfortable with twills and want be challenged. Twill experience necessary.

8 hours                      6" x 8"  
**Advanced**                      **\$50**



FR826 Friday 8:00am - 5:00pm

Nantucket Herb Carrier
Bill & Charlene White
New Bern, NC

FR831 Friday 8:00am - 5:00pm

Waste Management
Mary & Jimmie Earl McKinzie
Washington, IL

FR833 Friday 8:00am - 5:00pm

Small Geni's Basket
Jerry Maxey
Piedmont, SC

Oval Nantucket herb carrier is perfect for your garden. Cherry base, double handles, rims, and hardwood spokes. Mold included with class fees.

This useful basket starts with a wood base and is woven over a plastic trash can which stays inside the basket as a permanent liner. The sides are a twill weave using natural flat oval and seagrass. The basket is finished with a Gretchen border.

Walnut base & ring with #5 round spokes, #3 round weavers and seagrass. Students will learn various wicker weave techniques using 3 & 4 weavers, step ups, seagrass hills and shaping to fit a wooden ring under the rim.

8 hours
All Levels
6" x 15" x 5"
\$129

8 hours
Intermediate
13" x 11"
\$58

8 hours
All Levels
13" x 5"
\$70



FR835 Friday 8:00am - 5:00pm

Vertigo
Char Ciammaichella
Aurora, OH

FR840 Friday 8:00am - 5:00pm

Nothing is Finer Than to Be In Carolina
Alice Ogden
Franklin, NH

FR848 Friday 8:00am - 5:00pm

Trisket
Joni-Dee Ross
Summerfield, NC

This basket begins by inserting all natural spokes into a wood base. Weaving techniques include 4-rod twining, many rows of 3-rod twining and diagonal weave pattern. Shaping is set up with 3-rod twining to make this great pattern.

This miniature kitten head black ash basket woven with 1/32" fine/fine black ash weavers. Chase woven working over a form that has the 3/32 black ash bottom already "jump started". Well seasoned students will enjoy this delicate weave. Rim and handles are prepared for easy and quick attaching.

The Trisket Nantucket basket has a wood base, slip on rim and hardwood staves. The weavers are cane and the hardwood staves do not need to be bent. Many tips will be discussed on how to make Nantucket baskets easy to weave. The base, slip on rim and staves are cherry. Please contact the teacher if you prefer walnut.

8 hours
Intermediate
9" x 14" x 8"
\$54

8 hours
Intermediate/Advanced
2" x 4.25"
\$95

8 hours
All Levels
3.75" x 10.75" x 3.5"
\$98



FR854 Friday 8:00am - 5:00pm

**Checkmate**  
**Trista Rothgerber**  
 Santa Claus, IN

This is a large bushel style basket that starts with a wooden base. All weaving is done using chase weave with an emphasis on shaping. The handles start with #10 round reed, which is then wrapped using #2 round. These handles offer a nice highlight to this basket.

8 hours                      10" x 12"  
**Intermediate**                      **\$49**



FR865 Friday 8:00am - 5:00pm

**Raspberry**  
**Linda Scherz Allen**  
 Rome, NY

This is a great class size basket. Twine the base with 7 ply waxed linen, add a beaded foot and continue weaving your way up the side with more 7 ply and beads. Finish with a braided rim. You decide one braid or two. Emphasis on shape, tension, and techniques. Tools: tape measure, small sharp scissors, bead tray, needle with large eye waxed linen packing tool,

8 hours                      1.25" x 1.25"  
**Beginner/Intermediate**                      **\$28**



FR873 Friday 8:00am - 5:00pm

**Kaleidoscope**  
**Flo Hoppe**  
 Rome, NY

Kaleidoscope begins with a split spoke round base. Ridge weave is the basis for the central design of this basket bordered by a row of 4-rod wale above and below. The rows of ridge weave are later enhanced with overlays of cane. The border is a 3-row rolled border.

8 hours                      7.5" x 11"  
**Intermediate/Advanced**                      **\$88**



FR877 Friday 8:00am-5:00pm

**Cheochee**  
**Laura Lee Zanger**  
 Augusta, GA

This basket is woven in the richness of forest colors and the 1-2-3 Cherokee twill designs the Chief's Daughter and Man in the Coffin. The base layout will be simplified by starting from a corner. Students will have the opportunity to learn to weave the first three rows simultaneously if they choose. The handle rim combination is woven in one continuous motion.

8 hours                      8.5" x 10" x 16"  
**Intermediate/Advanced**                      **\$70**



FR879 Friday 8:00am-5:00pm

**Sweet Pea**  
**Candace Katz**  
 Springdale, AR

Sweet pea is the 5th addition to the series of baskets that use a round base with holes in place of a slot, this allows for a quick setup and time to work on shaping. Placement of flat reed allows for the embellishment of maple strip to create the arrows. The rim is 4-rod wale with spokes used as an interest to the rim with braiding inside to complete the basket. Limited color choices.

8 hours                      6.5" x 8"  
**Intermediate**                      **\$42**



FR884 Friday 8:00am - 5:00pm

**Lidded Braid Weave**  
**Eileen LaPorte**  
 Washington, MI

This little basket will be woven all in round reed. Techniques include: Japanese weave, triple weave, twining, braid weave and a lip f or the lid along with a rolled rim for the top. Weave a star shape lid for this basket. Braid weave on the side makes a nice design. Several color choices for the braid weave.

8 hours                      4" x 6.5"  
**Intermediate**                      **\$48**





FR886 Friday 8:00am - 5:00pm

***Bureau Twist***  
**Eric Taylor**  
 McMinnville, TN

Now there is a new twist to the Cottage Bureau Basket. Have some fun with curling. Basket is woven over a mold with hand pounded black ash weavers. Flared cherry handles and pre-bent rim, gives this basket a distinctive look.

8 hours                      5" x 7.5" x 3"  
**Intermediate**                      **\$115**



FR897 Friday 8:00am - 5:00pm

***Twisted Swirl Table Lamp***  
**Julie Kleinrath**  
 Grand Junction, CO

Woven on our assembled lamp base, this basket features a twill pattern woven in stop/start weaving. Shaping is a major feature. Suggestions will be given for lamp shade sizes and where to purchase. Lots of color choices to choose from for the spokes. A small "lashing buddy" will come in very handy for finishing this basket.

8 hours                      10.5"x 7" diameter  
**Intermediate**                      **\$55**



FR8102 Friday 8:00am - 5:00pm

***Whitford Farms***  
**Marilyn Wald**  
 Riga, MI

Whitford Farms is a storage type basket. Many things can be contained within such as newspapers, books or magazines. The base has runners on the bottom to insure durability. Handles will be added to the rim by drilling holes to attach. Handles are level with the rim so the basket can be stored under the shelves or in cabinets.

8 hours                      13" x 6" x 14"  
**All Levels**                      **\$60**



SA403 Saturday 8:00am - 12:00pm

***"We"ave R Family Frame***  
**Tony Cubeta**  
 Melbourne, FL

Using hand cut paper, you will twill weave this project. Next you will learn to incorporate your project into a photo frame. Bring a photo to be cropped to 4 x 4 to complete this project.

4 hours                      7.5" x 8"  
**All Levels**                      **\$35**



SA412 Saturday 8:00am - 12:00pm

***Flora***  
**Debbie Hurd**  
 Garfield, AR

Basic weaving techniques are used in the main part of this basket. Flat and flat oval reed are both combined for a nice contrast. A braided handle is the highlight of this class. Color choice of cloth flower and matching accent rows at class time.

4 hours                      8" x 10" x 10"  
**All Levels**                      **\$28**



SA413 Saturday 1:00pm - 5:00pm

***Pegasus***  
**Debbie Hurd**  
 Garfield, AR

Pegasus begins on a round wood base. It flares out then comes straight up. Shaping is the focus on the tall sides. Color placement and adding embellishments to the finished basket creates its attractive look. Slower weavers may have to finish the rim or lashing on their own time. Color choice at class time. Small bent tip packer required.

4 hours                      9" x 8" diameter  
**Intermediate**                      **\$32**



SA427 Saturday 8:00am - 12:00pm

**Buzzin**  
**Kay Harriger**  
 Magnolia, NC

This little basket is rectangular in shape and is decorated with buttons, bees and a bee hive. It has a filled in bottom, the stakes are 3mm and the weavers are scraped cane. It was down sized from a Vicki Worrell original. Thank you for letting me downsize it. An ott lite may be useful.

4 hours      1.25" x 2.25" x 2.25"  
**All Levels**      **\$30**



SA428 Saturday 8:00am - 12:00pm

**Lighting the Trees**  
**Kay Harriger**  
 Magnolia, NC

Woven from scraped cane and decorated with mini trees and Christmas lights, this little basket has a swing handle. All tools used will be supplied and an Ott light is useful.

4 hours      1.5" x 1.5" x 2.25"  
**All Levels**      **\$30**



SA429 Saturday 8:00am - 12:00pm

**Sweet Rose Ann**  
**Elaine Sinclair**  
 Salem, WV

Begin by laying out spokes and weaving a round base. Students will learn how to add stakes to enlarge base. Shaping will be stressed. Students will learn how to attach berries as they lash the rim, for a stunning effect. Embellishments include a homespun bow and more berries. Choose red or orange berries by contacting teacher.

4 hours      6.5" x 5.5"  
**All Levels**      **\$48**



SA431 Saturday 1:00pm - 5:00pm

**Jeffery's Wheels**  
**Elaine Sinclair**  
 Salem, WV

Students will weave a round base to create this cute little urn. Shaping will be stressed to get the pot belly then back in to create a "neck" where you will put bi-colored Cherokee wheels.

4 hours      9.5" x 28" diameter  
**Intermediate**      **\$48**



SA436 Saturday 8:00am - 12:00pm

**Lacy Heart Necklace**  
**Pamela Zimmerman**  
 Washington, NC

Weave an elaborate freeform lacy heart necklace, using a pottery heart as a base. Learn to incorporate different colored pieces of thread, if you desire, for a layer, multi-toned look. Or make your lace all one color, as you please! Bring small sharp scissors, recommend light and magnifier. Many color choices. As seen in Belle Armoire Jewelry Magazine.

4 hours      2" x 1-5/8" x 10"  
**All Levels**      **\$35**



SA474 Saturday 1:00pm - 5:00pm

**Little Gem**  
**Candace Katz**  
 Springdale, AR

This versatile little basket starts on an oval ash base and uses two beautiful hand carved swing handles. Basic weaving techniques make this a great beginner basket and the addition of space dyed reed adds to the character.

4 hours      5.5" x 10" x 5.5"  
**All Levels**      **\$36**



SA487 Saturday 1:00pm - 5:00pm

**Heather**  
**Kathy Tessler**  
 Howell, MI



SA490 Saturday 8:00am - 12:00pm

**Toddlers Teddy & Me Bench**  
**Steve Atkinson**  
 Lennon, MI



SA4100 Saturday 8:00am - 12:00pm

**Sciathog**  
**Bonnie Gale**  
 Norwich, NY

Weave an ash necklace basket over a mold you keep. Choose your favorite dyed accent and try continuous twill weave. Features a unique rim treatment. Fee includes materials for two baskets. Finish one in class and start the second if time allows. All tools provided.

4 hours                      .25" x 2" x 2"  
**Intermediate**                      **\$24 for two**

Just the right size for teddy and your toddler to sit and read together. Woven of shaker tape or nylon webbing. Many colors to choose from, creating your own color combinations. Learn two different weaves, twill or checkerboard. The pine double seat comes stained, varnished and ready to weave.

4 hours                      12" x 24.75" x 20"  
**All Levels**                      **\$75**

This classic Irish potato straining frame basket starts with a prepared and dried hoop. Students will place the first set of ribs using God's Eye weaving. Randing weave continues from each side as the other sets of ribs are progressively inserted. A range of naturally processed and colored willows allow students to experiment with design variations.

4 hours                      3" x 13"  
**Beginner**                      **\$56**



SA614 Saturday 9:00am - 4:00pm

**Ridge Weave Carrier**  
**Dianne Gleixner**  
 Brookfield, WI



SA622 Saturday 9:00am - 4:00pm

**Hues**  
**Mary & Jimmie Earl McKinzie**  
 Washington, IL



SA624 Saturday 9:00am - 4:00pm

**Medium Rectangular Tote**  
**Kay Kjeldgaard**  
 Bloomington, IN

This basket is woven over a class mold to ensure a great shape. Students will insert flat and round reed spokes into an oval slotted wood base. Techniques include triple twining, ridge weave, and over/under weaving. Natural and smoked reed will be used. Students need to bring quick curing glue.

6 hours                      8" x 12" x 6"  
**Intermediate/Advanced**                      **\$50**

This small market basket with a solid woven base is handy for collecting and carrying small items. The space-dyed reed and unique reverse handle wrap add to its charm. Several color choices will be available.

6 hours                      6" x 8" x 4"  
**Beginner**                      **\$37**

This functional and sturdy basket has a rectangular slotted finished base with seven dividers. The dividers create separate compartments; two have special features holes to hold your scissors. A single or double lashed rim will be used and shaping will be emphasized. Price will be based on wood choice.

6 hours                      14" x 17.5" x 7.5"  
**Intermediate**                      **\$78-\$92**





SA627 Saturday 9:00am - 4:00pm

**Blueberry Bowl**

**Kathy Garren & Lisa Sowers**  
Chocowinity, NC

To this uniquely shaped hand thrown pottery bowl, add a center piece with hand etched blueberries. Other center piece choices will be offered and include robin with nesting eggs, starfish and customized requests. The basics of pine needle coiling will be taught. Scissors are the only tool needed.

6 hours                      4.5-5" x 6"  
**All Levels**                      **\$70**



SA630 Saturday 9:00am - 4:00pm

**Double Spiral Hills**

**Jerry Maxey**  
Piedmont, SC

This basket consists of a walnut base with #5 round spokes and #3 round weavers and seagrass. Students will learn to weave seagrass "hills". They will learn to change the pattern on the basket by adding spokes and weavers.

6 hours                      11" x 6"  
**Intermediate/Advanced**                      **\$60**



SA634 Saturday 9:00am - 4:00pm

**Night & Day Basket Bracelet**

**Barb McNally**  
Norwich, NY

This odd-count peyote bracelet is stitched in 11/0 Japanese delica beads, with alternating panels of color. Bracelet will be finished with sterling silver findings. Color choices for the border colors will be available. A good easy project for everyone. Battery powered Ott lights will be provided for class use.

6 hours                      .75" x 6-7"  
**All Levels**                      **\$34**



SA643 Saturday 9:00am - 4:00pm

**Trumpfry Box**

**Nathan Taylor**  
Hohenwald, TN

This all wooden basket is made with ash staves set into a slotted cherry base and woven with ash weavers. A slotted cherry rim and drop on lid adorned with a bold metal handle complete this basket design. A great place for the man in your life to stash his wallet & keys. Students will learn mold weaving and slotted rim attachment techniques

6 hours                      6" x 9.5" x 5"  
**Intermediate**                      **\$99**



SA645 Saturday 9:00am - 4:00pm

**Adagio**

**Flo Hoppe**  
Rome, NY

Adagio is a smaller oval basket woven with No. 4 spokes and No. 2 weavers. The sides are woven with Japanese weave using double weavers. The focal point of the basket is the top band of diamond weave woven over smoked flat oval reed. The 4-row rolled border is worked over a No. 6 core.

6 hours                      7.5" x 9.5" x 4.74"  
**Intermediate/Advanced**                      **\$68**



SA650 Saturday 9:00am - 4:00pm

**Shades of Blue Tote**

**Peggy McCarson**  
Simpsonville, SC

Based on a willow basketry pattern the wooden oval base has pre-inserted spokes locked into place with rows of 3 rod wale. The sides are a double weave with a natural and a spaced dyed blue reed. Handles are inserted to help with shaping. Additional rows of 3 rod wale complete the sides. Different colors available by contacting Peggy early.

6 hours                      9" x 17" x 6"  
**Beginner/Intermediate**                      **\$58**



SA657 Saturday 9:00am - 4:00pm

**Smoky Hills**  
**Becki Newsome**  
 Swansboro, NC

Smoky Hills has a solid woven base and stacked rows on side and ends of basket. The rim is braided and the stacked sides represents the rolling Carolina mountains. Cane embellishing the sides represents the peaks and valleys of the Great Smokies. Start/stop weaving and 3-rod wale are other techniques used.

6 hours                      6.5" x 22" x 17"  
**Intermediate**                      **\$65**



SA662 Saturday 9:00am - 4:00pm

**Steve's Miniature Fishing Creel**  
**JoAnn Kelly Catsos**  
 Ashley Falls, MA

Inspired by my husband, Steve, an avid fly fisherman, this miniature replica of a fishing creel is woven of black ash splint over a puzzle mold (which must be taken apart for the basket to be removed). The wooden lid, latch, and leather straps, along with the hand-tied fly make this basket perfect. Student toolbox provided.

6 hours                      2.25" x 3" x 2-3/8"  
**Intermediate/Advanced**                      **\$65**



SA664 Saturday 9:00am - 4:00pm

**Bark, Vine and Copper Basket**  
**Matt Tommey**  
 Fairview, NC

Students will use kudzu, poplar bark, mimosa bark and copper wire to create a basket using twining, cross stitch and folded bark border techniques.

6 hours                      7" x 5"  
**Intermediate**                      **\$75**



SA666 Saturday 9:00am - 4:00pm

**Baker's Bowl**  
**Gina Kieft**  
 Rothbury, MI

Woven mostly with round reed, this bowl will dress up any table. Learn a twined and triple twined base with spoke insertion. Shaping will be emphasized as you are weaving up the sides of the basket. Learn a beautiful braided border. Several color choices will be offered.

6 hours                      12" x 5.5"  
**Intermediate**                      **\$42**



SA681 Saturday 9:00am - 4:00pm

**Black Tie**  
**Julie Kleinrath**  
 Grand Junction, CO

Woven on an oval wood base, this basket is woven in round reed. Three bands of 3/8" black dyed ash are added with chain waling separating them. The basket is finished with a handmade wood handle. Finished with a waxed linen lashing and an "X" over the black dyed ash.

6 hours                      4.5" x 8" x 8"  
**Intermediate**                      **\$35**



SA803 Saturday 8:00am - 5:00pm

**Somebody's Basket - Large**  
**Peggy Adelman**  
 Greensboro, NC

This basket uses a 7" heart shaped Williamsburg handle. The base has an open weave. Shaping with the Williamsburg handle will be stressed. The rim is an outside to inside Gretchen border. Rim is setup like a braided border but woven like a Gretchen.

8 hours                      7" x 12" x 7"  
**All Levels**                      **\$50**





SA811 Saturday 8:00am - 5:00pm

***Cedar Treasures***  
**Pam Talsky**  
 Waterford, WI

Experience the joy of weaving with hand harvested Alaskan cedars. A twill base and sides make for a lovely design and solid bottom. Learn the Haida techniques of twining and working with yellow cedar. All beads for your own personal touch on your treasure!

8 hours                      4.5" x 4.5" x 3.5"  
**Intermediate**                      **\$65**



SA816 Saturday 8:00am - 5:00pm

***The Gathering***  
**Billy Owens**  
 Aurora, MO

Made of hand split white oak, the Gathering basket has a woven oak "herringbone" bottom and 2 loop handles also made of oak. I will share how I select my trees, how I hand split the material making it usable for weaving, and the Owens method of rimming.

8 hours                      9" x 15" x 8.5"  
**All Levels**                      **\$80**



SA822 Saturday 8:00am - 5:00pm

***Prairie Wind Tote***  
**Annetta Kraayeveld**  
 Beloit, WI

The basket begins with a two-toned herringbone twill base. Then the fun begins! Weaving up the sides while embellishing the basket with overlays and wraps. Leather handles are added and then the rim is lashed with waxed linen. Woven in brown, smoked and natural, this makes a great everyday basket. Bring a large tapestry needle.

8 hours                      5" x 13" x 7.5"  
**Intermediate**                      **\$65**



SA827 Saturday 8:00am - 5:00pm

***Atlantic Beach Tote***  
**Bill & Charlene White**  
 New Bern, NC

Nantucket style beach tote made with hard wood staves, cherry handles, base and extra wide rims. Great basket for memorable trips to the shore. Named for the local beach in eastern North Carolina. Mold included with class.

8 hours                      7.5" x 16.5" x 9"  
**All Levels**                      **\$175**



SA828 Saturday 8:00am - 5:00pm

***Sassy***  
**Sandy Whalen**  
 Milford, MI

Shaping of willow is the emphasis of this basket with its arched sides. A basic knowledge of French randing is helpful. Students will learn how to pack to increase the height of the sides. Special tools: large beach or bath towel.

8 hours                      9" x 14" x 13"  
**Intermediate/Advanced**                      **\$80**



SA834 Saturday 8:00am - 5:00pm

***Spaced Dyed Market Basket***  
**Carolyn Kemp**  
 Glouster, ME

This twill weave basket is woven with 1/2" reed in "gem" tone colors, blended with natural walnut stain. Students will weave a solid bottom in 2/2 twill, upset, weave sides in a 2/2 twill. Focus on maintaining straight sides and fitting push-in oak handle. Roomy, beautiful, and fun to weave.

8 hours                      6" x 11.5" x 12"  
**All Levels**                      **\$48**



SA841 Saturday 8:00am - 5:00pm

**Black Ash Beveled Basket**

**Alice Ogden**  
Franklin, NH

This basket is woven with high quality black ash splints prepared by the teacher. It has a "lengthwise" handle. It is chase woven up the sides and comes with a well prepared, hand whittled rims and handles for easy attachment. A useful size for letter, veggie and many more uses. A sturdy family treasure.

8 hours                      8" x 12.5" x 6.5"  
**Beginner/Intermediate                      \$125**



SA842 Saturday 8:00am - 5:00pm

**Black Plaid**

**Ruth Garcia**  
Westerly, RI

This basket starts with a pre-finished maple base on a class mold. Students will insert black and white reed staves to begin the plaid design. Using dyed and natural Hamburg cane as weavers, a plaid design is created. The basket is finished with a reed rim, a black rim cap and lashed with waxed linen. A maple handle can be added for an additional cost. Tool kit is provided.

8 hours                      4.5" x 7"  
**Beginner/Intermediate                      \$80**



SA844 Saturday 8:00am - 5:00pm

**Midnight**

**Dona Nazarenko**  
Tunbridge, VT

This has a dark woven dyed reed base and spokes. The natural weavers give this basket the striking effect you see. The large oval basket is woven in a plain weave but the rim is not plain at all. The outside is just as attractive as the inside.

8 hours                      10" x 18" x 5"  
**Intermediate/Advanced                      \$64**



SA845 Saturday 8:00am - 5:00pm

**5" Nantucket Lamp**

**Joni-Dee Ross**  
Summerfield, NC

The 5" Nantucket Lamp is an accent lamp. The base, slip on rim, lid and pedestal base are hand turned. The lamp parts are included in the kit. An easy pattern will be taught. The shade is not included in the kit. The wood will be walnut. Contact teacher if you prefer cherry.

8 hours                      8.5"-9" w/o shade 5.5  
**All Levels                      \$150**



SA851 Saturday 8:00am - 5:00pm

**Four Leaf Clover Basket & Tray**

**Pati English**  
Seneca, SC

Start with a 4-leaf clover woven base, three-rod wale bands of color, and inside spiral techniques pictured in green, brown, and natural round reed with color choice. Finish with bispokes, and 4-rod wale "foot". Weave 1/4" flat oval start/stop side walls with outer wall decorative open weave technique.

8 hours                      3" x 10"-13", w/handle 15"  
**Intermediate                      \$68**



SA855 Saturday 8:00am - 5:00pm

**Oktoberfest**

**Trista Rothgerber**  
Santa Claus, IN

This basket starts with an oblong base and continuous weave. The arrows are created using a two color 5 rod wale. The handle is constructed using #10 round reed with a herringbone wrapped handle. The handle is secured to the basket with cross knots and rice character stitches.

8 hours                      \$49  
**Intermediate**



SA861 Saturday 8:00am - 5:00pm

**Cover and Carry**  
**Candace Williams**  
 Burgaw, NC

Basket is woven on a wood base with over/under weaving, triple twining and working with 2" ash strip. Basket is finished with split handles, ash strip cover and top cover. Colors will vary.

8 hours                      13" x 18" x 8"  
**Beginner/Intermediate      \$79**



SA862 Saturday 8:00am - 5:00pm

**Pottery Base Basket**  
**Jean Reed**  
 Hill, NH

Exquisite bowl acts as a base for creative and free form weaving, using dyed & natural reeds. You will construct your basket with twining and tapestry techniques. Rims will be discussed and embellishments added. You are urged to bring shells with holes, beads feathers or fibers to personalize your basket.

8 hours                      6-8" x 6" x 6-8" x 4-6"  
**Beginner/Intermediate      \$65**



SA863 Saturday 8:00am - 5:00pm

**Bellsu**  
**Linda Scherz Allen**  
 Rome, NY

Linda will have your solid wood base with flat oval spokes glued in ready for you to weave. Triple twine with cotton cord, add ribbon accent and complete with a folded rim. Emphasis on shaping, pattern, and tension as you weave. Linda will demonstrate and teach you her techniques. Contact teacher for tool needed.

8 hours                      2" x 4" x 2-3/8"  
**Beginner/Intermediate      \$30**



SA866 Saturday 8:00am - 5:00pm

**Ride On**  
**Gail Hutchinson**  
 Milton, WV

This basket starts with a wooden base and colored spokes. Learn three and four rod-wale w/ a step up. Hand shaping is stressed. Several coil or combinations to choose from. Amish leather holds the basket to the bicycle handlebars. Embellishment included. Cable ties helpful.

8 hours                      6.5" x 9.5" x 9.5"  
**Intermediate                      \$66**



SA871 Saturday 8:00am - 5:00pm

**Medium Nesting Bin**  
**Sharon Klusmann**  
 Tallmadge, OH

These three nesting bins have solid woven bases and are completely smoked and dyed reed. Skills taught are start/stop weaving, twining, arrow twining, creating a handle opening, traditional rim and braided handle pulls. You will weave the medium bin and have kits for the small and large.

8 hours                      12" x 13" x 8" (med)  
**Intermediate                      \$99**



SA878 Saturday 8:00am - 5:00pm

**Oconee Twill Tote**  
**Laura Lee Zanger**  
 August, GA

This tote begins with a 3-3 twill base. The sides are woven in a Cherokee 1-3-5 twill in black and natural. One of the medallions in the design is omitted so students can weave in their initial personalizing their tote. Leather handles are added. Professional graph for design, alphabet and a worksheet included.

8 hours                      6" x 12" x 9.5"  
**Intermediate                      \$70**





SA885 Saturday 8:00am - 5:00pm

***Oval Sweetgrass with Side Handles***  
**Barbara McCormick**  
 McClellanville, SC

Delight your dinner guests with a skillfully crafted oval sweetgrass basket with decorative side handles. Basket is coiled of sweetgrass and long leaf pine needles and lashed with palmetto strips. Techniques taught will enable students to design a variety of shapes and sizes of sweetgrass baskets.

8 hours                      various sizes  
**All Levels**                      **\$85**



SA893 Saturday 8:00am - 5:00pm

***Pie R Square***  
**Karen Maugans**  
 Waynesboro, VA

Students will weave this lidded double pie carrier with unique adjustable divider beginning with a woven base. Hoop used for inside rim, therefore shaping will be strongly emphasized.

8 hours                      12" x 12" x 8.5"  
**Intermediate**                      **\$72**



SA8101 Saturday 8:00am - 5:00pm

***Harmony Hill***  
**Marilyn Wald**  
 Riga, MI

The elegant shape of Harmony Hill is a replica of an old fashioned flower gathering basket. The base is wooden with a D handle attached. It is created using traditional weaving methods. The braid is a rewoven braid giving it the appeal of elegance fit for any garden or room. Students will learn braiding techniques, chase weaving and decreasing.

8 hours                      10" x 14" x 12" dia.  
**Intermediate**                      **\$50**



SA1/SU1001 Sat 9am-4pm, Sun 8am-12pm

***Harmony Striped Shoulder Bag***  
**Denise Anthony**  
 Robbinsville, NC

Beginning on a slotted wood base, students will learn purse construction to create a shoulder bag that is not only fun to carry but very functional. Students will be challenged as they shape this continuous weave, pinstripe design. With hands-on instruction, students will make a pattern, cut and stencil their own collar of buttery soft leather.

10 hours                      5" x 9" x 9"  
**Advanced**                      **\$85**



SA/SU1005 Sat 9am-4pm, Sun 8am-12pm

***Jewel Toned Twill - Large***  
**Anne Bowers**  
 Kearneysville, WV

This beautiful twill woven basket features ten different colors for weavers and spokes. Rim is lashed with waxed linen and has a dyed rim filler. Bring two spoke weights to class.

10 hours                      30" x 7" x 12"  
**Advanced**                      **\$130**



SU406 Sunday 8:00am - 12:00pm

***Papago Tray Necklace***  
**Judy K. Wilson**  
 Palmetto, GA

This striking necklace is woven with small waxed cotton cord, over large paper rush. Many colors to choose from and kit makes two necklaces. Teacher will cover weaving techniques, neatness and tension. Neck cord is adjustable & slides to fit all sizes. Matching beads for each color adorn the neck cord. Medium to firm hand strength needed.

4 hours                      2" pendant + neck cord  
**Intermediate**                      **\$22**





SU408 Sunday 8:00am - 12:00pm

*Go Nuts*  
Pam Talsky  
Waterford, WI

Learn to weave a little nut cup or two or three. Walnut or hickory nut to start and several design options will be taught. Increase stitches, adding a wrapped "foot" and accenting with beads. Many beads to choose from. Finish one in class or two or three. Materials for 3 included.

4 hours  
All Levels  
2.5-3" x 3.5-4" x 8"  
\$35



SU416 Sunday 8:00am - 12:00pm

*The Child's Lunch*  
Billy Owens  
Aurora, MO

Made of hand split white oak, this basket has a woven oak "herringbone" bottom and 1 handle also made of oak. I will share how I select my trees, how I hand split the material making it usable for weaving, and the Owens method of rimming.

4 hours  
All Levels  
5" x 8" x 6" w/o handle  
\$55



SU421 Sunday 8:00am - 12:00pm

*Roll Basket*  
Dianne Gleixner  
Brookfield, WI

Students will insert flat reed spokes into a round slotted wood base. Techniques include start/stop weaving, triple twined arrows, and adding leather handles to the rim. Shaping will be emphasized while sides are woven. Color choices for arrows and handles will be available.

4 hours  
Intermediate  
4" x 10"  
\$48



SU443 Sunday 8:00am - 12:00pm

*Tree of Life*  
Kathy Garrens & Lisa Sowers  
Chocowinity, NC

Pine needle basketry and pottery come together to make this creative piece! Coil a design around a hand-thrown pottery center piece to create a pot holder or a wall hanging piece. The basics of pine needle coiling and adding beads for embellishment will be taught.

4 hours  
All Levels  
6" diameter  
\$30



SU444 Sunday 8:00am - 12:00pm

*My Passion Beaded Pin*  
Barb McNally  
Indianapolis, IN

The pin is done in odd-count peyote stitch using 11/0 Japanese delica beads. The beaded pin will be attached to a two inch kilt pin upon completion. A good beginning project for non-beaders. Battery powered Ott lights will be provided for use in class

4 hours  
All Levels  
1.2" x 1.75"  
\$24



SU446 Sunday 8:00am - 12:00pm

*Flower Power*  
Char Ciammaichella  
Aurora, OH

Students begin weaving this basket by inserting dyed and natural spokes into a round wood base. Techniques include start/stop weaving and 4 rod twining using natural and dyed weaver. Basket is woven in a very specific order to get this great cross type patterning. Metal flower is added after basket is woven.

4 hours  
Beginner  
7" X 10"  
\$32



SU449 Sunday 8:00am - 12:00pm

*November Smoke*  
Peggy McCarson  
Simpsonville, SC

The design comes from using a combination of natural and smoked weavers and spokes. Twining holds the spokes in place. The middle design is an over two under two start/stop weave. Each successive row starts one spoke to the left. Hints given for rimming the thin handle.

4 hours                  6" x 9" x 5.5"  
**Beginner**                  \$35



SU452 Sunday 8:00am - 12:00pm

*Birch Canister*  
Dona Nazarenko  
Tunbridge, VT

You will be stitching your paper birch canister with waxed linen and attaching a wooden base. Additional accents in stitches and pine needles. Matching lid with leather complete project. Each will vary. Birch is harvested by teacher. Student will need to bring a tapestry needle, small hammer, sharp pointed awl and a few clothes pins.

4 hours                  6" x 14"  
**All Levels**                  \$66



SU455 Sunday 8:00am - 12:00pm

*Double Take*  
Joni-Dee Ross  
Summerfield, NC

The Double Take is our version of a "double wall" Nantucket basket. The base and slip on rim are turned from morado wood. Students will learn the techniques needed to use hardwood weavers as staves. The "staves" are inserted directly into the base. The mold is a teacher mold.

4 hours                  3.5" x 5.25"  
**All Levels**                  \$60



SU482 Sunday 8:00am - 12:00pm

*Wrapped Twine Open Weave*  
Matt Tommey  
Fairview, NC

Students will use poplar bark and kudzu to create a beautiful basket using wrapped twine and twining techniques.

4 hours                  4" x 4"  
**Beginner/Intermediate**                  \$45



SU497 Sunday 8:00am - 12:00pm

*Square Jewel Basket*  
Julie Kleinrath  
Grand Junction, CO

Woven on a square wood base over a class mold, this basket features a band of beaded wire, green cording and waxed linen. The band is surrounded by chain waling and the basket is finished with a matchstick border.

4 hours                  6.5" x 6.5" x 3"  
**Intermediate**                  \$35



SU4101 Sunday 8:00am - 12:00pm

*Really Random*  
Bonnie Gale  
Norwich, NY

In the hen basket tradition, using unpeeled willow, two hoops of willow will be woven and attached with willow binding at the handle. Then random weave commences with occasional loops over the two openings. This basket is great fun and shows how good structure can be created from randomness! Bring pruning shears & awl to class.

4 hours                  8" x 10" x 9"  
**All Levels**                  \$56

# TEACHERS BIOGRAPHY

## 2015 Weaving in Carolina

### **Peggy Adelman**

*Greensboro, NC*

My name is Peggy Adelman. My basket career started 15 years ago when we first moved to North Carolina. I took a basket making class at Guilford Technical Community College. From there I joined the North Carolina Basket Makers Association and have taken many classes and workshops from different teachers. Five years ago, I became the basket making instructor at GTCC. Greensboro now has a basket guild, the Gate City Weavers. I am currently responsible for scheduling and teaching the guild projects that our members create. As you can tell, I love weaving baskets and helping others learn the craft. My web site is [Bluemoonbaskets.com](http://Bluemoonbaskets.com). Pages 24, 33

### **Linda Scherz Allen**

*Rome, NY*

I started basketweaving in the 1980's shortly after moving to northern NY. My interest in weaving quickly became an important part of my life. I started designing, working with bark, waxed linen and teaching. It's exciting for me to create intricate patterns and incorporate different materials in my designs. I have had the pleasure of teaching at various locations for art centers, guilds and groups throughout the Northeast. I have met many wonderful people and I enjoy the privilege of sharing my basketry experience with others. Pages 12, 16, 28, 36

### **Denise Anthony**

*Robbinsville, NC*

A basket maker and teacher of basket making since 1993, I reluctantly learned the basics of basket making with NC Extension Agent, Laurie Stevens (retired) and furthered my education with the help of Lyn Siler's books as well as years of attending basket making

conventions. Thanks to many mentors along the way, I now teach my basket creations at various conventions and at a local Community College.

Recently, I have begun to add other materials to basket creations, giving new life to the classics.

My designs incorporate basic basket making techniques, so that a beginner will develop a good foundation on which to build. My focus is designing baskets that are easy enough for the beginner student yet challenging and interesting enough to attract all levels of basket makers. Pages 13, 26, 37

### **Sandy Atkinson**

*Lennon, MI*

Sandy began weaving in 1983 and opened Atkinson's Country House in 1985 to sell supplies and teach basketry. In 1986 she worked with U of M doing 5-13 week PBS-TV series that went national and international and was also picked up by Sterling Digital of NY.

Sandy has taught at state conventions and workshops in Michigan, Ohio, Indiana, Illinois, Missouri, Oklahoma, Arkansas, North Carolina, South Carolina, Georgia, Tennessee, Kentucky, New York, Connecticut and Wisconsin. Pages 20, 23

### **Steve Atkinson**

*Lennon, MI*

Steve retired from GM in 2000 after 34 years of service. He now works full time at Atkinson's Country House. Steve started weaving several years ago and now builds all the stools and benches for his designs as well as the wood cutting for the basket shop. Steve also coached at the high school level for 30 years and continues to do so. Pages 17, 23, 31

### **Jan Beyma**

*Wilmington, NC*

I have been teaching and weaving basket for over 20 years. I have taught at NCBA conventions, seminars and for our local Port City Guild. I enjoy weaving both Nantucket and reed baskets. I love to stimulate the interest of basket weaving and sharing weaving tips with others that I've learned over the years, while also learning new tips from my students. I have served on the NCBA board as membership chair and member at large over the years. Pages 13, 24

### **Anne Bowers**

*Kearneysville, WV*

Anne is from the eastern panhandle of West Virginia where she works in her studio designing and teaching baskets. She was a production basket maker for many years and she brings those skills into each basket that she teaches. Ribbed basketry is her specialty and some of her baskets have taken on a sculptural perspective in recent years. Anne has participated in many basket exhibits, has received an award from Tamarack for being outstanding in the skills of basketry and has won many awards for her work. She is an active member of the National Basketry Organization. She has taught on 3 basketry cruises, teaches basketry widely and lectures about the woven form. She is in her 33<sup>rd</sup> year of weaving and is still fascinated with the woven form. Pages 12, 19, 37

### **Joann Kelly Catsos**

*Ashley Falls, MA*

JoAnn Kelly Catsos is an award-winning traditional black ash splint basketmaker and teacher from MA. Her husband, Steve harvests the black ash trees and processes them into splint. JoAnn has been teaching basketry nationally at art and craft schools, fiber/basketry



conferences, local guilds and private groups for 30 years. JoAnn's work has been published many times and recently graced the cover of Crafts Report magazine. Her baskets are in many collections - most notably, the Cole-Ware Collection of American Baskets in the Renwick Gallery of the Smithsonian American Art Museum. Pages 13, 20, 25, 33

### **Char Ciammaichella**

*Aurora, OH*

Char has been weaving for almost 20 years and teaching for the last 10 years. She weaves mainly with reed and loves playing with color placement to get many different and interesting patterns. She teaches at home, at guild gatherings, and many weaving conventions. She loves teaching and passing down the weaving techniques to all. She has recently opened her website [www.charswings.com](http://www.charswings.com) and is constantly trying new techniques and ideas. She has been the coordinator for Winter Weave Conference for the last 13 years. Pages 18, 27, 38

### **Tonya Cubeta**

*Burke, VA*

I have been weaving baskets for over twenty-five years. I first started making baskets in North Carolina with Judy Wobbleton. I enjoy teaching all types of baskets and currently teach classes at my home as well as in several conventions and seminars. I still enjoy taking classes too because I feel that there is always something new to learn. Pages 11, 13, 24, 29

### **Pati English**

*Seneca, SC*

Resident with SC Arts Commission and Native American basket collector, Pati has enjoyed teaching her love of weaving for over 27 years. Materials hand dyed in her studio are found in original designs and patterns available nationally. Her baskets and patterns

have appeared on SCETV, in magazines, and the book, "New and Different Materials for Weaving and Coiling". Juried baskets earned numerous awards in museums, art shows and at NCBA exhibits. Pati maintains her website, [www.BasketsMySpecialty.com](http://www.BasketsMySpecialty.com), stays active with several basket guilds around the US as well as the Osher Lifelong Learning Institute, OLLI, at Clemson University. Pages 12, 18, 25, 35

### **Bonnie Gale**

*Norwich, NY*

Bonnie has been a professional traditional willow basketmaker and willow artist for the past 31 years. In 1999, she was awarded an Artist Fellowship from New York Foundation for the Arts. Her living willow installations have been featured in Vogue, Vogue Living, House and Garden, and Fiber Arts magazines. In 2009, her work was featured on PBS "Cultivating Life" series and in 2010 she appeared on the Martha Stewart Show. She produced her first book: *Living Willow Form* in 2014. Her main web site is [www.bonniegale.com](http://www.bonniegale.com). Pages 26, 31, 39

### **Ruth Garcia**

*Westerly, RI*

Ruth is originally from the Midwest and now living in Rhode Island, has been weaving for over eighteen years and loves the Nantucket tradition of basket weaving for its craftsmanship and durability. She has won several awards which include the NCBA 2008 Viewer's Choice in General Membership, Honorable Mention at the 82<sup>nd</sup> Annual Member Exhibit of South county Art Association, 2011 Association of Michigan Basketmakers Convention Exhibit for Best Nantucket Style and both the NCBA 2012 First Place and Second Place in the Professional Category. Her basket creations have been accepted into juried exhibits at the Helm House Gallery and the Artist Cooperative Gallery of Westerly in Rhode Island. Ruth has taught at many

guild conventions, and enjoys designing and developing different techniques. Pages 11, 15, 21, 35

### **Kathy Garren**

*Chocowinity, NC*

Kathy has been basket weaving since 1986. Kathy really enjoys working with long leaf pine needles, which she gathers herself. For the past several years, Kathy and her sister Lisa have combined pine needle basketry with hand-thrown pottery bases, bowls and vases to make some very artisan quality pieces. It is Kathy's desire to win basket makers over to pine needle basketry, through creating projects that are not too time-consuming, simple, fun, and very unique. Pages 14, 25, 32, 38

### **Dianne Gleixner**

*Brookfield, WI*

Dianne lives in Brookfield, WI and began weaving baskets in 1987. She has designed 50 patterns and sells her baskets at art and crafts shows near her home and online through her Etsy site at [www.Etsy.com/shop.DiannesBaskets](http://www.Etsy.com/shop.DiannesBaskets)

Dianne has taught in many states for their local guilds and state organizations. In October 2012, Dianne won first place in the Miscellaneous Materials category and the "Viewer's Choice" awards in the Exhibit Room at the AMB Convention. In March 2013, she won first place in the Mold Woven category and the "Viewer's Choice" award in the Exhibit Room at the NCBA Convention. [www.diannegleixnerbaskets.com](http://www.diannegleixnerbaskets.com) Pages 18, 24, 31, 38

### **Kay Harriger**

*Magnolia, NC*

I have been making baskets since 1988. In 1990 I took a class from Margaret Blythe and fell in love with the minis. I like to share new ideas with others. I like the challenge of figuring out how to make a large basket into a mini. I have taught in Kentucky, Florida, Montana, Pennsylvania, and in North Carolina at



seminars and conventions. Pages 11, 14, 21, 30

### **Flo Hoppe**

*Rome, NY*

Flo Hoppe is a full-time studio artist, teacher, and author. She began her career in 1971 teaching herself basketmaking from a small booklet published in 1924. Her main emphasis is on wicker basketry and Japanese basketry. She lived in Japan from 1968-71 and on a return trip to Japan in 1994, studied with two master basketmakers. Her published books are entitled **Wicker Basketry**, **Contemporary Wicker Basketry** (which has been translated into German), and **Plaited Basketry with Birch Bark**, co-authored with Vladimir Yarish and Jim Widess. She teaches and exhibits worldwide, with teaching venues in England, Canada, Japan, Russia, and Australia. She is the recipient of the Lifetime Achievement Award presented by the NBO in 2013. Pages 19, 28, 32

### **Lynn Hoyt**

*Blounts Creek, NC*

Lynn loves using, learning and teaching about natural materials. When she's not traipsing through fields, woods and swamps, she specializes in coiled baskets, and carved gourds, and wins awards for her work. She is co-founder and President of the Natural Fibers Group and maintains several basketry related websites. She's contributed articles to *Readers' Report*, NBO and other publications, and currently serves as a Member-at-Large for NCBA. Lynn enjoys encouraging creativity and sharing her enthusiasm and knowledge with both adults and children. Pages 17, 20

### **Debbie Hurd**

*Garfield, AR*

Debbie began weaving about 30 years ago at a community education program in Arkansas. She retired from teaching first grade Reading and is now active

designing new baskets, traveling, and working with her local guild. She has taught in AR, KS, OK, MO, IL, IN, NC, TX, OH, KY, WI, AL, WV, PA and NE at conventions, guilds and small groups. She also taught on the Basket Weaving Cruise in 2010, 2012 and 2014 She and Candace Katz co-own the business, Bases To Weave. Pages 12, 13, 24, 29

### **Gail Hutchinson**

*Milton, WV*

Weaving has been a big part of my life for the last 30 years. I love designing and teaching. I've written over 100 patterns and taught most of them. When I'm not on the road teaching or in my workshop, I enjoy playing with ink, paint, and paper and watching my grand babies grow. Pages 22, 23, 36

### **Candace Katz**

*Springdale, AR*

Candace has been weaving for nineteen years and teaching for thirteen years. Her designs include wood bases woven with reed, maple & cane. She has taught at MBG, LLWB, KBA, NCBA, Stateline, Oklahoma and Kansas weekend weaves. Candace is in partnership with Debbie Hurd in Bases To Weave, a supplier of basket weaving materials and kits. She enjoys meeting new people, visiting with old friends and sharing tips & tricks. For her the journey is all about the love of the weave. Pages 12, 19, 28, 30

### **Gina Kieft**

*Rothbury, MI*

I began weaving baskets through my local Community Education when my youngest son was a year old – that was twenty years ago. At this time I have over 100 patterns written, have had works published in two basket magazines and have won several awards. I am grateful for the opportunity to teach my love of basketry at different venues in the Mid-West and East Coast. I enjoy teaching at my local

Art's Council and Council on Aging as well as scouts and private groups. I also teach basket weaving in my home studio two days a week. My web site is located at: [www.ginasbaskets.com](http://www.ginasbaskets.com). I love trying new mediums and new techniques; however, twill is my favorite! Pages 17, 26, 33

### **Carolyn Kemp**

*New Gloucester, ME*

Carolyn Kemp lives in New Gloucester, Maine. She loves teaching basketry and considers her "patience" a real plus with beginners as well as experienced weavers. Carolyn is known for the books and basket art she and Lyn Siler have done over the past decades. Basketmaking is history relived and traditions in the making and NCBA has provided so many basketmakers with the opportunity to experience both. Carolyn is proud to call herself a basketmaker. Pages 21, 34

### **Julie Kleinrath**

*Grand Junction, CO*

Julie has been weaving for the last 24 years and teaching for the last 21. She published her first book: **Woven Designs on Wooden Bases** in 2010 and is working on her second which continues to reflect her own designs. She has recently moved to a new retail space that is large enough for her studio as well as classes but not too large to take care of. Her favorite part of teaching is seeing the joy on her students faces when they finish their first basket. Pages 12, 20, 29, 33, 39

### **Kay Kjeldgaard**

*Bloomington, Indiana*

In 1985, Kay had her own shop and started weaving and teaching basketry. She specializes in traditional and functional reed baskets with unusual accents and bright colors; she has designed over 45 basket patterns. Her teaching background includes school groups, local guilds, 4-H classes for Heartland Community College, state

basket conventions and private instruction. Kay has entered the Illinois State Fair and has won many ribbons over the years. She graduated from the University of Iowa with a major in teaching and a minor in art and has done graduate work in fiber art as well as studies in Nantucket and Stowe. Pages 21, 31

**Sharon Klusmann**  
*Tallmadge, OH*

Sharon Klusmann has been weaving, designing and teaching basketry for 29 years. Her website: [www.SharonKlusmann.com](http://www.SharonKlusmann.com) has seven pages of her original designs. She not only teaches basketry from her home studio in Tallmadge, OH but at national conventions and guilds throughout the country. She has had three of her designs featured in *Create and Decorate Magazine* in partnership with her friend, Barbara Bunsey, who creates the painting designs for these baskets. Sharon is also the author of her "Business in a Basket" to help others who love basket weaving turn their passion into a successful teaching business. Pages 16, 23, 36

**Annetta Kraayeveld**  
*Beloit, WI*

Annetta considers herself a weaver, a teacher and a life-long student of basketry. She began weaving in 1994, when she literally begged for a weaving lesson from a local basket weaver. Since that time she has been largely self-taught, learning from both her mistakes and successes. Weaving because she can't stop, Annetta continues to find that the challenge of mastering new techniques and weaving the pictures in her mind keep basketry an exciting art form.

Annetta's work has received a number of awards including first in Nantucket Class and Viewer's Choice at the Association of Michigan Basketweavers' 2013 convention and first in Naturals Class at the Texas Basket Weavers Association's 2014 Convention. Pages 11, 14, 26, 34

**Alma Lambert**  
*Asheville, NC*

Alma Lambert is a native of western North Carolina who has been weaving since 1987. She has taught at the NCBA and Indiana Conventions. She has taught all levels of basket weaving at Asheville Buncombe Technical Community College, Brevard College, Greenville Hospital Craft Program and Arrowmont Craft School. She is currently serving on the NCBA Board as President and served as the editor of *The Reeders' Report* for 14 years. In 1998 she was convention co-coordinator. She has been the president of the Blue Ridge Basketmakers since 1996. Her greatest pleasure is sharing her knowledge of basketry. Alma studied basket weaving in 1994 with Lyn Siler. Page 10

**Eileen LaPorte**  
*Washington, MI*

I have been weaving baskets for over 30 years. My early baskets were made from jute and clothesline rope. I quickly moved on to more traditional materials, mainly reed. Basketry has taken me all over the US and also Germany, England, Australia and New Zealand. I have taught at local guilds and state conferences and local craft shops for many years. I enjoy sharing my knowledge of basketry with my students. Pages 19, 28

**Karen Maugans**  
*Waynesboro, VA*

Karen started weaving in 1999 and quickly fell in love with the art so much that upon retirement she immediately went to work in a basket shop and began teaching. She and her husband, Kim, own "KnK Creations". Other interests are reading, gardening, church functions and enjoying the pleasures of each new day. She and Kim live in a small community called New Hope in the Shenandoah Valley of Virginia. They have a small place in the woods and share a mixture of pets: goats, chicken

and an ample supply of cats. Pages 20, 26, 37

**Jerry Maxey**  
*Piedmont, SC*

I've always loved working with wood, but I began weaving baskets in 1987 while living in an apartment with no access to a workshop. I started with rib baskets and plaited baskets from books, but once I discovered wicker weave I became obsessed and started developing my own patterns. Now I am able to incorporate turned wooden elements into my work and weave in much larger scales. Pages 18, 27, 32

**Peggy McC Carson**  
*Simpsonville, SC*

Weaving since 1990, Peggy McC Carson gets her best ideas in the middle of the night; therefore, a pad and pencil are next to the bed. She tries to combine different techniques in a single basket. She is always looking for different embellishments to add that special touch to her creations. Some baskets are useful; some are just for looking at. If you need to ask for a special color, contact Peggy early at [pmccarson@charter.net](mailto:pmccarson@charter.net). Pages 15, 25, 32, 39

**Barbara McCormick**  
*McClellanville, SC*

Barbara was born and raised in Mt. Pleasant, SC where she learned the trade of sweetgrass basket weaving from her grandmother, mother, aunts and other family members at a very early age. She has since carried on this tradition and has shared her talent with others including her family. Barbara teaches several classes along the East Coast and her work displayed in several publications including: "Row Upon Row", "Sweetgrass Baskets of the Lowcountry", a documentary *Grass Roots, the Enduring Art of the Lowcountry Basket* as well as the Kaminsky House (Georgetown, SC) and

McKissick Museum (Columbia, SC) just to name a few. Sweetgrass basket weaving is an art form that came from west Africa over 300 years ago during slavery. Pages 16, 25, 36

**Mary & Jimmie Earl McKinzie**  
*Washington, IL*

Mary's love of baskets led to her first basket class, and she soon got Jimmie Earl involved. They have been weaving together for over 18 years. Mary is Past-President of Land of Lincoln Basket Weaving Association (LLBWA). They are members of several guilds and have participated in countless conventions. Both are juried members of the Illinois Artisans Association. This teaching duo retired from their "day jobs" in 2012, and they are living their dream of spending more time together, weaving and teaching basketry. Pages. 11, 27, 31

**Barb McNally**  
*Indianapolis, IN*

It started with a tube of seed beads from the local Ben Franklin when I was twelve. I fell in love with beading, but pushed it to the back burner when I went to college, and didn't return to it for more than twenty-five years. In the meantime, I discovered basket weaving, and now love incorporating baskets into my designs. Making bracelets is my favorite, but pins, amulet pouches and pendants are a close second. Pages 18, 32, 38

**Dona Nazarenko**  
*Tunbridge, VT*

When the snow "flies" or the rain pours, that's when I really enjoy creating baskets, whether in reed or birch bark. Most of my wooden accents are made by my husband, Warren. We are owners of Country Spirit Baskets since 1988 and offer a variety of workshops in our studio. When I am not home teaching classes, I can be seen traveling across the country teaching basketry at galleries, art schools and basket

conventions. Pages 22, 35, 39

**Becki Newsome**  
*Swansboro, NC*

Becki began weaving with friends in a garage, two times a week in 1992. By the third basket she was hooked. In 1996, she began teaching and sharing her designs with friends. In 2000 she joined Coastal Weavers Basketmakers and then the NCBA, where she learned new techniques and designs. Becki has taught in WV, VA, and Jabez, KY, NCBA Conventions and at several guilds throughout the state. Becki is a firm believer and thinks it is very important to get young people to learn this art and thereby pass it on to future generations. Pages 17, 25, 33

**Billy Owens**  
*Aurora, MO*

My name is Billy Owens; I am the second generation of the "Owens" White Oak basket makers. My dad, Dale Owens, was the first basket maker in my family that I knew so obviously he is the one that taught me basket making. My wife Theresa helps me weave, and we have third and even a fourth generation family members that help us out from time to time. We have had our White Oak basket business, Owens Oak Baskets, for around 35 years right here in Southern Missouri. All the material we use in our baskets is made from White Oak timber grown here in the Ozarks, which I go to woods and hand select, we have a sawmill that I cut the logs and then I hand shave off with a homemade hand tool which was made by my Dad we call a "Split Knife". I have taught at many conventions and workshops all over the United States. In my classes I enjoy sharing with the folks everything about the "White Oak", from selecting the right tree to how I prepare the material for weaving. It is my goal when I teach my classes, that first and foremost the people in my class leave there with a finished basket and had a great time learning about my White Oak

baskets. Pages 14, 21, 34, 38

**Alice Ogden**  
*Franklin, NH*

Alice is a self-taught basketmaker and has been teaching her craft over 30 years. She harvests and prepares her own splints and signature hand-whittled White Oak rims and handles. Alice believes "less is more" when working with baskets, making tools, using only common items that are at our finger tips. She was recognized as a 2012 Fellow by the NH State Council of the Arts and was selected to do the 2013 annual ornament for the League of NH Craftsmen. She was in the Cole/Ware exhibit at the Smithsonian, October 2013. This is her fifth trip to NC and she states that she enjoys the early spring view that come with the trip to NC. Pages 19, 27, 35

**Trista Rothgerber**  
*Santa Clause, IN*

I took my first basket class in 1994 and have been passionate about weaving since. In 1996 I was asked to organize classes in order to help fourteen 4-H youth members with their Basketry project. I have continued these classes for the past 18 years, helping this project grow to over 70 4-H youth in 2014. I spend a great deal of time creating and planning baskets from my own experiences and ideas. I hope you guys enjoy them as much as I do. Pages 15, 28, 35

**Jean Reed**  
*Hill, NH*

Murray Hill Weaving is Jean's dream come true-resulting from her love of basketry and chair seating of over 30 years. Murray Hill is located on 685 Murray Hill Road, Hill, NH in the heart of New England. There, Jean teaches an array of classes which include basketry, chair bottoming and gourd art. Pages 22, 36



**Joni-Dee Ross***Summerfield, NC*

When Joni Dee Ross wove her first basket in 1989, she discovered the perfect expression of her exuberant optimism and joy in life. Then living in Rocky Mount, she founded Handmade North Carolina Baskets in 1991. Now living in Summerfield, NC, she also co-owns the Woodland Nantucket Retreat Company with Denise Bendelewski of Magnolia Baskets.

Joni-Dee earned a degree in Education from Clemson University. She has written and published over 55 basket patterns. In addition to teaching weekly basketry classes in her Smithfield studio, Joni-Dee regularly conducts classes at conventions, private guilds, and art centers throughout the US. Pages 15, 27, 35, 39

**Elaine Sinclair***Salem, WV*

In 1989 I decided to explore the world of basket weaving through the West Virginia Homemakers Club. Shortly thereafter, I began teaching classes of my own. I have taught in several states and at my church vacation bible school.

In about 2006, I was juried into Tamarack in Beckley, WV, where one can still find my baskets and penny rugs for sale. In 2011 I was chosen as 1 of the top 15 of 3000 artisans and West Virginia Living Magazine did a feature article on those honored. This year 2013-14 I was nominated for the governor's award. Pages 11, 14, 24, 30

**Lisa Sowers***Fort Mill, SC*

Lisa turned her love of art into a career by studying graphic design and fine art at East Carolina University. After working for many years as a computer graphic artist she was introduced to clay nearly 20 years ago and since built a fully equipped studio. Having studied extensively with other working potters

through guild memberships and workshops she is always striving to learn more about the world of ceramics. A new addition to her work is designing bowls, vases, and center pieces for basketry. Pages 14, 25, 32, 38

**Pam Talsky***Waterford, WI*

It all started with a pine needle basket in June of 1994. Pam started traveling to Thorne Bay, Alaska in 1998 to harvest and prepare her own western red and Alaskan yellow cedar and spruce roots, where she continues to learn. Pam teaches workshops and conventions across the country where she has earned numerous awards. She wove three baskets for the Hoard Museum's 'Mystery of the Mounds Exhibit', opened April 2009. She donated 200 hours making willow tepees for the Ronald McDonald House of Wisconsin, which are still in use today. In 2010 she traveled to Dharmasala, India for 2 ½ weeks to teach the local women pine needle basketry so that they may have an industry to earn a living and make use of their long leaf Cher pine needles. Pages 13, 34, 38

**Eric Taylor***McMinnville, TN*

Eric lives in middle Tennessee and has been involved in traditional basket making and for over twenty-five years. His love for working with wood and the black ash tree inspired him to experiment further in the art, where he started creating his own contemporary designs that combined the elements of the Shaker and Nantucket baskets. He has won several awards and has been featured in multiple publications. Recently one of his baskets was shown in The Cole Ware Collection at the Smithsonian American Art Museum. Pages 19, 22, 29

**Nathan Taylor***Hohenwald, TN*

Now in his 37<sup>th</sup> year of basket making,

Nathan travels, America teaching his unique line of basket designs. While traveling he vends his company made kits, molds, tools and tiger and pounded ash splint. He's the co-author of "Shaker Baskets and the Legend of the Bushwacker Basket". He manufactures Nantucket baskets for the wholesale that are distributed worldwide. His website [www.NathanTaylorBaskets.com](http://www.NathanTaylorBaskets.com) and [www.basketshop.com](http://www.basketshop.com). The Nathan Taylor Basketshop has recently moved to Hohenwald, TN. There Nathan will teach, design baskets and raise fish. Pages 15, 22, 32

**Kathy Tessler***Howell, MI*

**I LOVE** teaching basketry! My goal as a teacher is to fill my students' heads with as many tips and techniques as I possibly can during a class. Of course I hope that they leave class with a basket that they really love. I began weaving in 1985 and have taught at every AMB convention since 1987. I also teach at several other conventions and gatherings nationwide. Pages 17, 26, 31

**Matt Tommey***Fairview, NC*

Matt Tommey has been a basketry artist for 21 years and is a member of the Southern Highland Craft Guild. His most recent work focuses on the use of a wide variety of southeastern invasive species, encaustic wax, clay and recycled metal in the creation of sculptural art vessels. Every basket begins with a walk in the woods. By responding to nature and incorporating many different barks, vines, branches and recycled metal, Matt is able to create one-of-a-kind sculptural creations that merge his contemporary style and love for movement with the simple beauty of nature. [www.MattTommey.com](http://www.MattTommey.com). Pages 16, 33, 39



**Marilyn Wald***Riga, MI*

Owner of XYZ Basket Works, Marilyn has been weaving since 1988 and began teaching in 1989 with two students. XYZ Basket Works was formed in 1992. Marilyn has taught at conventions, guilds and workshops around the US and Canada. Marilyn has been featured in "Basket Bits Magazine" and "Just Patterns". The students make teaching basketry special for her. It is rewarding seeing the look of a weaver as she or he completes their basket. Pages 20, 29 37

**Sandy Whalen***Milford, MI*

I've been teaching willow for over 30 years now and I still love and admire the beauty and strength of willow. I grow most of my weaving material on my farm "Whale-Inn Farms". I enjoy seeing old friends and seeking new ones at the different conferences. I hope to keep adding "chapters" to my "Willow Book". Pages 18, 34

**Bill and Charlene White***New Bern, NC*

Bill and Charlene have taught for NCBA conventions and seminars for almost 28 years. He is a past NCBA Board member and photographer for multiple conventions and seminars. She served as co-chair for the 1996 Convention and served as coordinator of numerous seminars. The both served as the 2008 Convention coordinators. Bill is best known for designing and making all their molds and working parts for the Whites' classes. The have taught at other state conventions, such as Indiana and Georgia. Both enjoy working together on their Nantucket designs. The enjoy making other style baskets but Nantucket baskets are their passion. Pages 27, 34

**Candice Williams***Burgaw, NC*

I have taught baskets for many years at local weave-ins, also at state conventions. I enjoy all types of baskets and love to give an extra decoration to make it more unique. Teaching is always a learning experience even for me because basketweavers are always willing to share things they have learned somewhere else. Pages 15, 22, 36

**Debbie Wilson***Travelers Rest, SC*

Debbie Wilson, is a retired art teacher from SC. She is a member of Upper SC Basket Guild, and has been weaving for 15 years. She teaches presently at several gourd retreats, and gatherings. Carving gourds and weaving on them with different techniques and materials are some of the things that she likes to do. Pages 16, 17

**Judy K. Wilson***Palmetto, GA*

Judy taught herself how to make baskets in 1984 after moving to the mountains of North Georgia. She is in her 29<sup>th</sup> year of weaving and teaching. Judy has taught in 20 states to thousands of students. She creates her own designs and also enjoys coiling, twining and beading. She works almost exclusively with fiber materials. Judy has a passion for making and teaching basketry and over the years she has been written up in a number of books and well as won many awards. Pages 37

**Judy Wobbleton***Williamston, NC*

A traditional basketmaker and teacher for over 30 years. Judy is co-founder of NCBA and coordinator for the first NCBA Convention, 2005 and Convention 2014. She enjoys creating new designs and incorporating traditional techniques. Her work has been published in "The Basket Book",

"Basketmakers Baskets", "Basketmakers Odyssey" and "The Ultimate Basket Book". She is a member of several NC County Arts Councils, serving as Treasurer and Vice Chair of Martin County Arts Council. Pages 17, 37

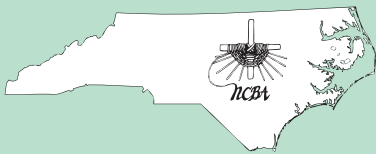
**Laura Lee Zanger***Augusta, GA*

Laura Lee Zanger has been designing baskets and writing patterns since October 2000. She has been teaching classes on the basketry circuit since 2002 and enjoys expressing her creativity using Cherokee, Choctaw and Chitimacha techniques. Laura Lee shares her excitement and enthusiasm for twills with everyone she encounters, maintaining the fascination of a child with every new idea, lesson and experience. Pages 10, 28, 36

**Pamela Zimmerman***Washington, NC*

Pamela has won numerous awards in art shows for her contemporary works and horsehair miniatures. She currently focuses on weaving "green" wedding baskets, made from chemical free, pesticide free collected wild materials, to be featured in organic "green" weddings. Pamela is co-founder of the Natural Fibers Group, and she coordinated NCBA 2006 Convention, Co-ordinated 2009 Convention, and was NCBA Secretary from 2007 – 2011. She has been NCBA webmaster since 2002. She is the founder/webmaster of the internet-based Pine Needle Group. Pages 14, 21, 30

Weaving in Carolina



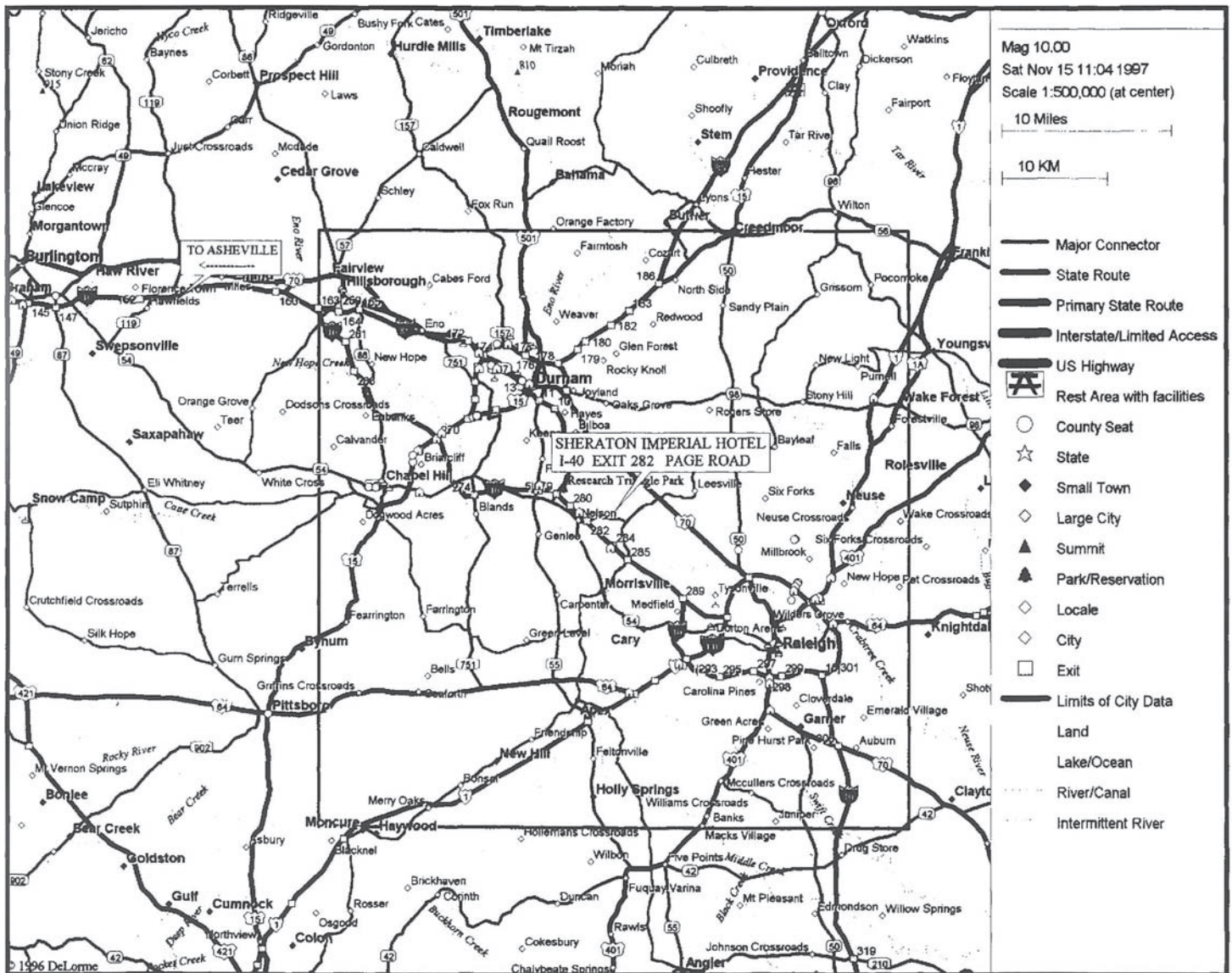
NCBA 2015

NCBA Convention 2015

Weaving in Carolina

March 19-22, 2015

Durham, North Carolina







*[www.ncbasketmakers.com](http://www.ncbasketmakers.com)*

**2015 March 19-22**

**2016 March 17-20**

**2017 March 16-19**

**2018 March 22-25**

**Be Sure to Join Us!**